

# 支那地學調查

自明治四十四年至大正五年

化石圖譜

## GEOGRAPHICAL RESEARCH IN CHINA

1911—1916

ATLAS OF FOSSILS

會長侯爵島直大

President Marquis N. NABESHIMA.

地學

石井八萬次郎  
杉本五十五鈴

化石

矢部部長克  
早坂一郎

GEOGRAPHY.

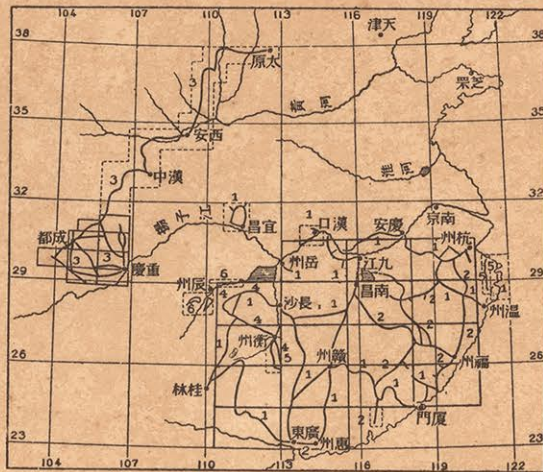
Y. Ishii.

I. Sugimoto.

PALÆONTOLOGY.

H. Yabe.

I. Hayasaka.



地學

野田勢次郎  
山根新次郎  
小林儀一郎  
福地信世

GEOGRAPHY

S. Noda.

S. Yamane.

G. Kobayashi.

N. Fukuchi.

東京地學協會

大正九年

TOKYŌ GEOGRAPHICAL SOCIETY

TOKYŌ 1920



## Plate I.

Fig. 1. *Lacopteris polypodioides* Brongn. nat. siz. (Jurassic.)

Loc :—Chia-chuan-tien, Hon chi shui, Yi chang, Prov. Hu-peh.

湖北省, 宜昌, 香溪水, 賈泉店

Fig. 2 and 3. *Neocalamites carrerei* Zeiller. nat. siz. (Lower Triassic.)

Loc :—Lung-wang-tung coal field, Chian pei hsien, Prov. Ssu-ch'uan.

四川省, 江北縣, 龍王洞炭田





1.



2.



3.



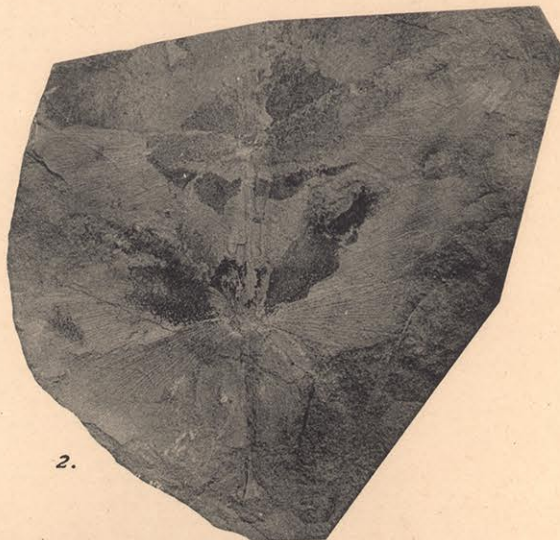
## Plate II.

- Fig. 1. *Lacopteris polypodioides* Brangn. nat. siz. (Jurassic.)  
Loc :— Chia-chuan-tien, Hon-chi-shui, Hsing-shan-hsien,, Prov. Hu-peh.  
湖北省, 興山縣, 香溪水, 賈泉店
- Fig. 2. *Sphenophyllum sinocoreanicum* Yebe. nat. siz. (Lower Triassic).  
Loc :—Ta-hsu tou, Chen-ti, An-chi-hsien, Prov. Fuh-kien.  
福建省, 安溪縣, 珍地, 大蔗頭
- Fig. 3. *Equisetum sarrani* Zeiller. nat. siz. (Lower Triassic.)  
Loc :—Ta-hsu-tou, Chen-ti, An-chi-hsien, Prov. Fuh-kien.  
福建省, 安溪縣, 珍地, 大蔗頭
- Fig. 4, 6. *Podozamites lanceolatus* L. and H. nat. siz. (Rhætic—Liassic.)  
Loc :—Fu-chia-fang, Ping-hsiag-hsien, Prov. Kiang-si.  
江西省, 萍鄉縣, 胡家坊
- Fig. 5. *Equisetum sarrani* Zeiller. nat. siz. (Lower Triassic.)  
Loc :—Ta-hsu tou, Chen-ti, An-chi-hsien, Prov. Fuh-kien.  
福建省, 安溪縣, 珍地, 大蔗頭





1.



2.



3.



4.



5.



6.



## Plate III.

Fig. 1. *Cladophlebis denticulata* Brongn. nat. siz. (Rhætic—Jurassic.)

Loc :—Ping-hsiang coal field, Ping-hsiang-hsien, Prov, Kiang-si.

江西省, 萍鄉縣, 萍鄉炭山

Fig. 2. *Podozamites* sp. *Tæniopteris spatulata* McClelland. nat. siz. (Rhætic—  
Liassic.)

Loc :—Fu-chia-fang, Ping-hsiang-hsien, Prov. Kiang-si.

江西省, 萍鄉縣, 胡家坊

Fig. 3. *Calamites* sp. nat. siz. (Permian—Carboniferous.)

Loc :—Ma-chia-kou, Yen-chuan-hsien, Prov. Shen-si.

陝西省, 延川縣, 馬家溝







## Plate IV.

Fig. 1. *Clathropteris meniscoides* Brongn. nat. siz. (Rhætic—Liassic.)

Loc:—Ping-hsiang coal field, Ping-hsiang-hsien, Prov. Kiang-si.

江西省, 萍鄉縣, 萍鄉炭山

Fig. 2. *Podozamites lanceolatus* L. and H. nat. siz. (Rhætic—Liassic.)

Loc:—Fu-chia-fang, Ping-hsiang-hsien, Prov. Kiang-si.

江西省, 萍鄉縣, 胡家坊

Fig. 3, 3a. *Tæniopteris spatulata* Mc Clelland. Fig. 3. nat. siz. fig. 3a  $\times 2$ . (Rhætic—Liassic.)

Loc:—Fu-chia-fang, Ping-hsiang-hsien, Prov. Kiang-si.

江西省, 萍鄉縣, 胡家坊

Fig. 4 4a. *Pecopteris* sp. Fig. 4. nat. siz. fig. 4a.  $\times \frac{3}{4}$ . (Lower Triassic.)

Loc:—Ta-hsu-tou, Chen-ti, An-chi-hsien, Prov. Fuh-kien.

福建省, 安溪縣, 珍地, 大蔗頭

Fig. 5, 5a. *Cladophlebis denticulata* Brongn. Fig. 5. nat. siz. fig. 5a  $\times 3$ . (Rhætic—Jurassic.)

Loc:—Cheng-chia-ling, Ch'ung-kiang-hsien, Prov. Kiang-si.

江西省, 崇江縣, 張家嶺

Fig. 6, 6a. *Neuropteris* sp. Fig. 6. nat. siz. fig. 6a.  $\times 2$ . (Lower Triassic.)

Loc:—Ta-hsu-tou, Chen-ti, An-chi-hsien, Prov. Fuh-kien.

福建省, 安溪縣, 珍地, 大蔗頭

Fig. 7. Erased.







## Plate V.

- Fig. 1. *Sphenopteris* sp. nat. siz. (Rhætic-Jurassic)  
Loc:—Ts'ang yuan, Ch'ung-kiang-hsien, Prov. Kiang-si.  
江西省, 崇仁縣, 滄源
- Fig. 2. *Clathropteris meniscoides* Brongn. nat. siz. (Rhætic-Liassic)  
Loc:—Si-tung-ting-shan, Lake Tai-hu, Prov. Kiang-su.  
江蘇省, 太湖, 西洞庭山
- Fig. 3. *Cladophlebis raciborski* Zeiller. nat. siz. (Jurassic)  
Loc:—Chia-ch'uan-tien, Honch'i-shui, Yi-ch'an-fu, Prov. Hu-peh.  
湖北省, 宜昌省, 香溪水, 賈泉店
- Fig. 4. *Pterophyllum (Anomozamites) inconstans*. F. Broun nat. siz. (Rhætic-Liassic)  
Loc:—Fu chia-fang, Ping-hsiang-hsien, Prov. Kiang-si.  
江西省, 萍鄉縣, 胡家坊
- Fig. 5. 5a *Cledophlebis raesserti* Presl. fig. 5. nat. siz. fig. 5a × 2 (Rhætic)  
Loc:—Ssu-lu-kuan, Hsing-an-hsien, Prov. Kiang-si.  
江西省, 興安縣, 司路館
- Fig. 6. *Podozamites distans* Presl. nat. siz. (Jurassic)  
Loc:—Ts'ang-yuan, Ch'ung-kiang-hsien, Prov. Kiang-si.  
江西省, 崇仁縣, 滄源
- Fig. 7. *Pterophyllum contiquum* Schenk. nat. siz. (Jurassic)  
Loc:—Ts'ang-yuan, Ch'ung-kiang-hsien, Prov. Kiang-si.  
江西省, 崇仁縣, 滄源
- Fig. 8. *Nevcalamites carrarei* Zeiller × 2. (Lower Triassic)  
Loc:—Lung-wang-tung Coalfield, Kiang-pei hsien, Prov. Ssu-ch'uan.  
四川省, 江北縣, 龍王洞嶺山
- Fig. 9. *Pecopteris* sp. nat. siz. (Lower Triassic)  
Loc:—Ta-Hsu-tou, Chen-ti, Anch'i-hsien, Prov. Fu kien.  
福建省, 安溪縣, 珍地, 大蔗頭
- Fig. 10. *Pterophyllum (Anomozamites) sp.* nat. siz. (Jurassic)  
Loc:—Ts'ang-yuan, Ch'ung-kiang-hsien, Prov. Kiang-si.  
江西省, 崇仁縣, 滄源
- Fig. 11. *Pterophyllum æquale* Brongn. nat. siz. (Rhætic-Liassic)  
Loc:—Fu chia-fang, Ping-hsiang-hsien, Prov. Kiang-si.  
江西省, 萍鄉縣, 胡家坊
- Fig. 12. *Laccopteris polypodioides* Brongn. × 2. (Jurassic)  
Loc:—Chia-ch'uan-tien, Hon-ch'i-shui, Yi-chang-fu, Prov. Hu-peh.  
湖北省, 宜昌, 香溪水, 賈泉店





Otaki Photo.



## Plate VI.

- Fig. 1a, b. *Clisiophyllum nodai* Yabe and Hayasaka.  $\times 1\frac{1}{2}$ . (Lower Carboniferous.)  
Loc:—East of Ai chia-ping, Wei-ning-hsien, Prov. Kuei-chou.  
貴州省, 威寧縣, 艾家坪ノ東
- Fig. 2a-g. *Lophophyllum sinense* Yabe and Hayasaka.  $\times 1\frac{1}{2}$ . (Lower Carboniferous.)  
Loc:—East of Ai chia-ping, Wei-ning-hsien, Prov. Kuei-chou.  
貴州省, 威寧縣, 艾家坪ノ東
- Fig. 3a, b. *Cylindrophyllum Simplex* Yabe and Hayasaka.  $\times 2$ . (Devonian.)  
Loc:—Hung-kuo chi, Ta-kuen hsien, Prov. Yun-nan.  
雲南省, 大關縣
- Fig. 4a, b. *Tetrapora elegantula* Yabe and Hayasaka. nat. siz. (Upper Carboniferous.)  
Loc:—Prov. Fuh-kien.  
福建省
- Fig. 5. *Tetrapora elegantula* Yabe and Hayasaka. *Cyathophyllum yamadai* Yabe and Hayasaka. nat. siz. (Upper Carboniferous.)  
Loc:—Between Huan-hua-yuan and Tung-tzu, Prov. Kuei-chou.  
貴州省, 相梓紅花園間
- Fig. 6, 8. *Gigantopteris dentata* Yabe. nat. siz. (Lower Triassic.)  
Loc:—Ling-shan tou, Lung-yen-hsien, Prov. Fuh-kien.  
福建省, 龍巖縣, 林山頭
- Fig. 7. *Gigantopteris dentata* Yabe. nat. siz. (Lower Triassic.)  
Loc:—Ta-hsu tou, Chen-ti, An-chi-hsien, Prov. Fuh-kien.  
福建省, 安溪縣, 珍地, 大蔗頭
- Fig. 9. *Gigantopteris* sp. nat. siz. (Lower Triassic.)  
Loc:—Ta-hsu tou, Chen-ti, An-chi-hsien, Prov. Fuh-kien.  
福建省, 安溪縣, 珍地, 大蔗頭







## Plate VII.

Fig. 1a, b. Fig. 2a. c. *Geinitzella crassa* Lonsdale. Fig. 1a, b.  $\times 8$ . fig. 2a  $\times 2\frac{1}{2}$ . fig. 2c  $\times 8$ . (Permian.)

Loc:—Chi-hai, Ton-chuan hsien (Fui-tse), Prov. Yun-nan.

雲南省, 東川縣(會澤), 耆海

Fig. 2b. Fig. 4. Fig. 5. *Myriopora pyriformis* Yabe and Hayasaka. Fig. 2b, and fig. 4  $\times 8$ . fig. 5. nat. siz. (Upper Carboniferous)

Loc:—South of Ssu-p'u, Wei-ning-hsien, Prov. Kuei-chou.

貴州省, 威寧縣, 四舖ノ南

Fig. 3a, b. *Halysites pycnoblastoides* Etheridge.  $\times 6$ . (Gotlandian.)

Loc:—Lo ling-po, Hu-ch'i, Hsing-shan-hsien, Prov. Hu-peh.

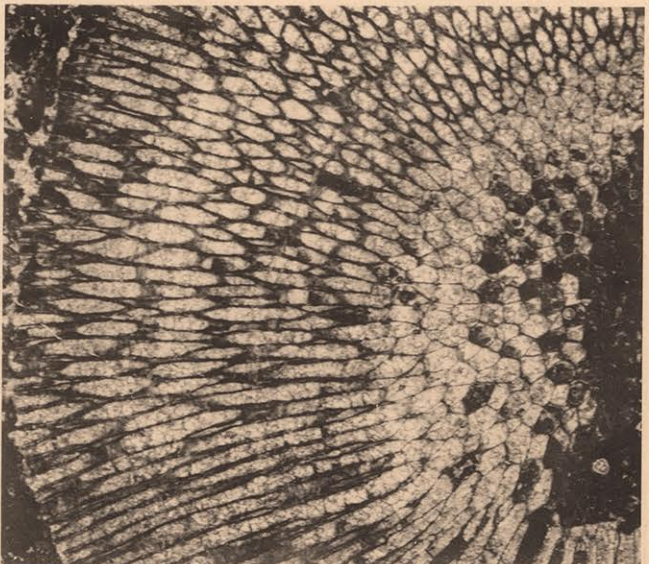
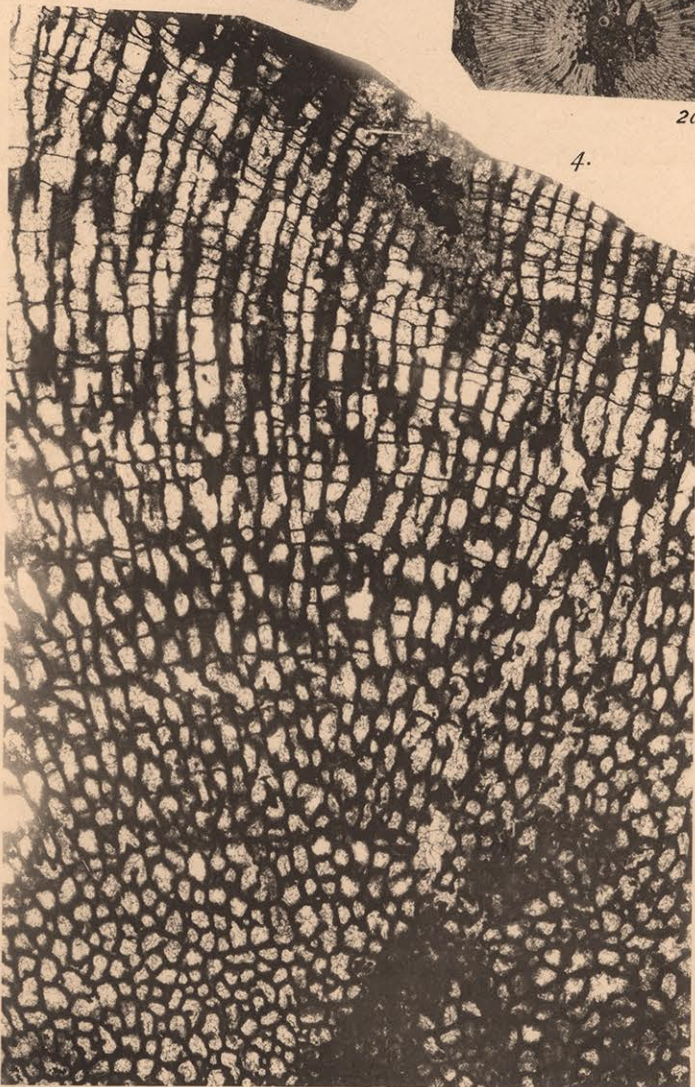
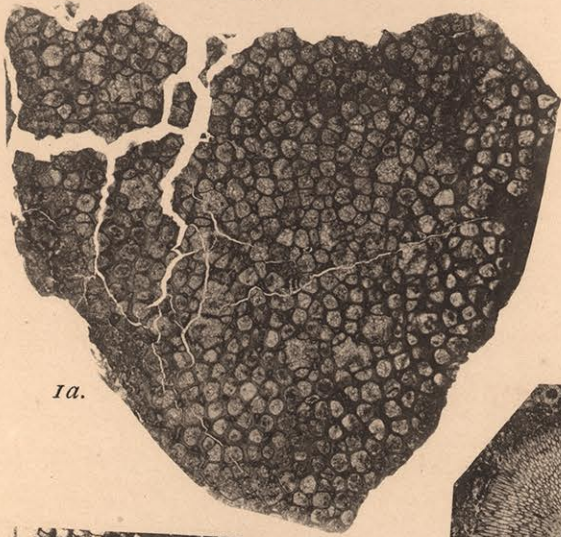
湖北省, 興山縣, 戶溪

Fig. 6. *Caninia* sp. nat. siz. (Upper Carboniferous.)

Loc:—Erh-shih-li-p'u, Prov. Shan-si.

山西省, 二十里舖







## Plate VIII.

- Fig. 1. *Lonsdaleia hupeiensis* Yabe and Hayasaka.  $\times 2\frac{1}{2}$ . (Carboniferous.)  
Loc:—Fu-shan coal feald, Lung-kong-chen Yang-hsing-hsien, Prov. Hu peh.  
湖北省, 陽新縣, 龍港鎮, 富山炭田
- Fig. 2a, b, c. *Favosites sinensis* Yabe and Hayasaka.  $\times 3$ . (Devonian.)  
Loc:—Pai-shih-p'u, Ping-wu-hsien, Prov. Kiang-si.  
江西省, 平武縣, 白石舖
- Fig. 3a, b, c. *Caninia cornucopiæ* Mich. mut. *neocarbonaria* Yabe and Hayasaka. nat. siz. (Upper Carboniferous.)  
Loc:—East of Yang-chiao-shan, Wei-ning-hsien, Prov. Kuei-chou.  
貴州省, 威寧縣, 羊角山ノ東
- Fig. 4a, b. *Cyathophyllum yanadai* Yabe and Hayasaka. nat. siz. (Upper Carboniferous)  
Loc:—Between of Hung-hua-yuan and Tung-tzu, Prov. Kuel-chou.  
貴州省, 桐梓, 紅花園間
- Fig. 5. *Cyathopyllum heterophylloides* Frech.  $\times 3$ . (Middle Devonian)  
Loc:—South of Ping-i-p'u, Ping-wu-hsien, Prov. Ssu-chu'an.  
四川省, 平武縣, 平驛舖ノ南
- Fig. 6a, b. *Lonsdaleia volzi* Yabe and Hayasaka.  $\times 3$ . (Upper Carboniferous—Permian.)  
Loc:—Hou-chang, Wei-ning-hsien, Prov. Kuei-chou.  
貴州省, 威寧縣, 石場
- Fig. 7. *Cyathophyllum (Fascicularia) Caspitosum* Goldf. var. *breviseptata* Frech.  $\times 3$ . (Middle Devonian.)  
Loc:—South of Ping-i-p'u, Ping-wu-hsien, Prov. Ssu-ch'uan.  
四川省, 平武縣, 平驛舖ノ南
- Fig. 8. *Lonsdaleia* sp. indet.  $\times 3$ . (Carboniferous.)  
Loc:—North of Pan-chiao, Kun-ming, Prov. Yun-nan.

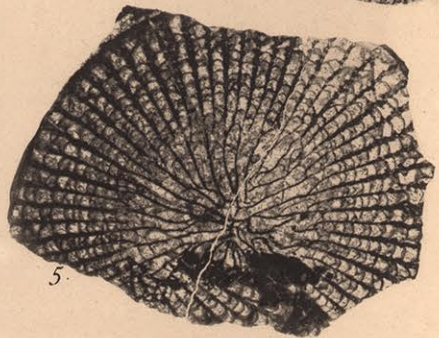




1.



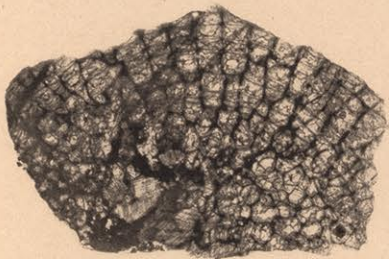
4a.



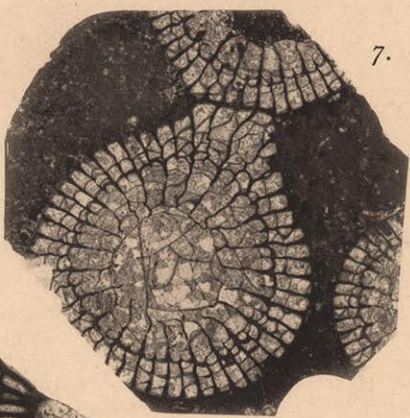
5.



6a.



2a.



7.



3a.



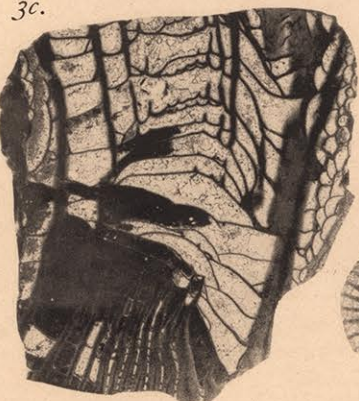
3b.



2c.



6b.



3c.



4b.



8.



## Plate IX.

- Fig. 1a, b. *Favosites goldfussi* M.-Edw. et Haime.  $\times 3$ . (Middle Devonian.)  
Loc:—Chi-li-p'u, Ta-kuan-hsien, Prov. Yun-nan.  
雲南省, 大關縣, 吉利舖
- Fig. 2a, b. *Favosites goldfussi* M.-Edw. et Haime.  $\times 3$ . (Middle Devonian.)  
Loc:—Pen chiao-tzu, Chao-hua-hsien, Prov. Ssu-ch'uan.  
四川省, 昭化縣, 偏橋子
- Fig. 3a, b. *Favosites goldfussi* M.-Edw. et H. var. *major* Frech.  $\times 3$  (Middle Devonian.)  
Loc:—South of Hsing-lung-pu K'ang-ting-hsien (Ta-chien-lu), Ch'uan-pien.  
川邊, 康定縣(打箭爐), 興隆舖ノ南
- Fig. 4a, b. *Favosites goldfussi* M.-Edw. et H. nat. siz. From the Crinoid bed of Gerolstein in Eifel, for comparison.
- Fig. 5a, b. *Favosites* aff. *forbesi* M.-Edw. et H.  $\times 3$ . (Middle—Upper Devonian.)  
Loc:—South of Ping-i-p'u, Ping-wu hsien, Prov. Ssu-ch'uan.  
四川省, 平武縣, 平驛舖ノ南
- Fig. 6. *Favosites gotlandicus* Lam.  $\times 3$ . (Gotlandian.)  
Loc:—Lo ling-po, north of No lu-ping, Hu-ch'i, Yi chang-hsien, Prov. Hu-peih.  
湖北省, 宜昌縣, 戶溪
- Fig. 7a, b. *Favosites asteriscus* Frech.  $\times 3$ . (Middle Devonian.)  
Loc:—Yang-lin-chang, Ta-kuan-hsien, Prov. Yun-nan  
雲南省, 大關縣, 楊柳場
- Fig. 8a, b. *Michelinia* (*Protomichelinia*) *microtoma* Yabe and Hayasaka.  $\times 3$ . (Permian.)  
Loc:—Mei-tzu-kou, south of Wu ch'ang, Prov. Hu-peh.  
湖北省, 武昌ノ南, 梅子溝
- Fig. 9a, b. *Tetrapora elegans* Yabe and Hayasaka.  $\times 3$ . (Upper Carboniferous.)  
Loc:—Chung-chiang-hsien, Prov. Ssu-ch'uan.  
四川省, 中江縣
- Fig. 10. *Stromatoporella lifeliensis* Nicholson, incrusting *Plagiopora denticulata* M.-Ed. et H.  $\times 3$ . (Middle Devonian.)  
Loc:—Men-k'an-shan, Tien-chuan-hsien, Prov. Ssu ch'uan.  
四川省, 天金縣, 門坎山
- Fig. 11a, b. *Cyathophyllum douvillei* Frech var. *sinensis* Yabe and Hayasaka.  $\times 3$ . (Middle Devonian.)  
Loc:—Yang-lin-chang, Ta-kuan-hsien, Prov. Yun-nan.  
雲南省, 大關縣, 楊柳場
- Fig. 12a, b. *Lithostrotion* (*Lithostrotionella*) *unicum* Yabe and Hayasaka.  $\times 3$ . (Carboniferous.)  
Loc:—Hon-shan, Ton-ch'uan-hsien (Fui-tse), Prov. Yun-nan.  
雲南省, 東川縣(會澤), 硤山







## Plate X.

Fig. 1a, b. *Diphyphyllum simplex* Yabe and Hayasaka. ×3. (Carboniferous.)

Loc:—Hsia-lo shi-chiao, Chi-yang-hsien, Prov. Hu-nan.

湖南省, 即陽縣, 下羅石橋

Fig. 2a, b. *Lithostrotion irregulare* Phill. var. *asiatica* Yabe and Hayasaka. ×3. (Carboniferous.)

Loc:—Cha-tu, Hsin-hua-hsien, Prov. Hu-nan.

湖南省, 新化縣, 港渡

Fig. 4. *Geinitzella waageni* Yabe and Hayasaka. ×8. (Permian.)

Loc:—North of Chiang-ti, Lu-tien-hsien, Prov. Yun-nan.

雲南省, 魯甸縣, 江底ノ北

Fig. 3. *Syringopora ramulosa* Goldf. ×3. (Carboniferous.)

Loc:—Hsia-lo-shi-chiao, Chi-yang-hsien, Prov. Hu-nan.

湖南省, 即陽縣, 下羅石橋





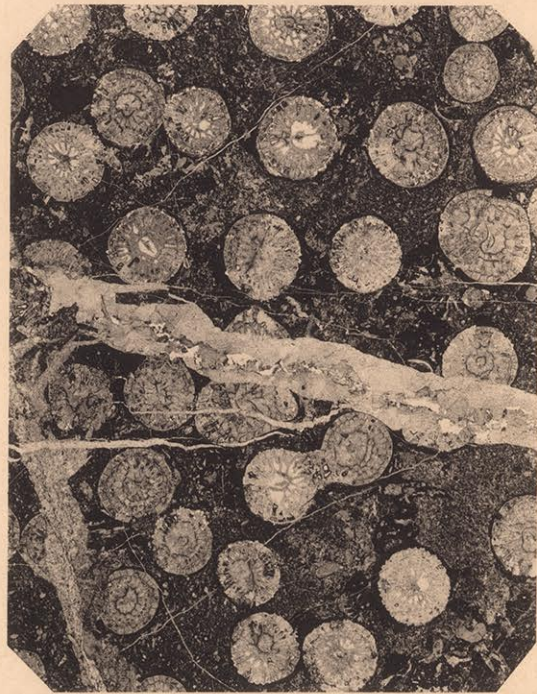
1a.



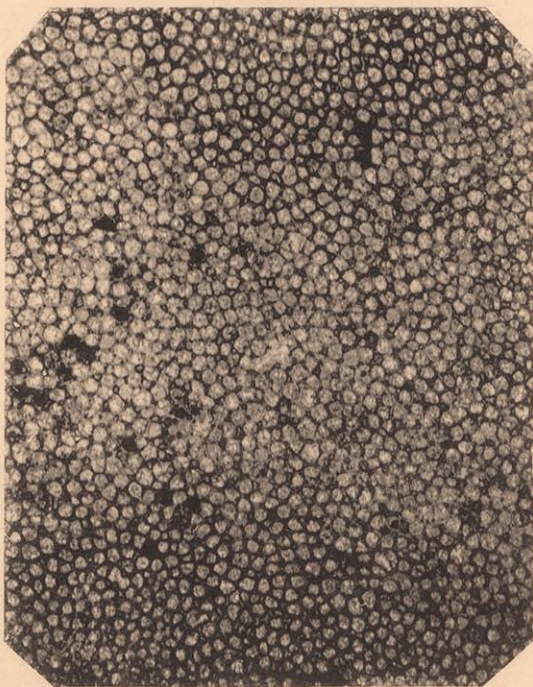
1b.



2b.

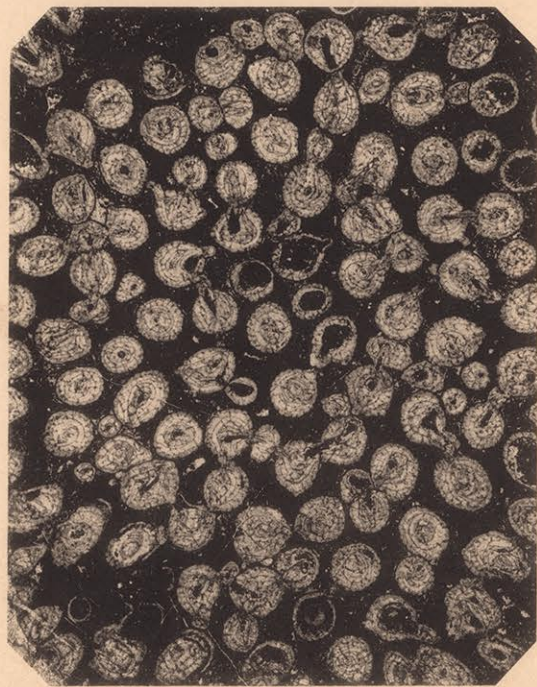


2a.



Tamura Photo.

4.



3.



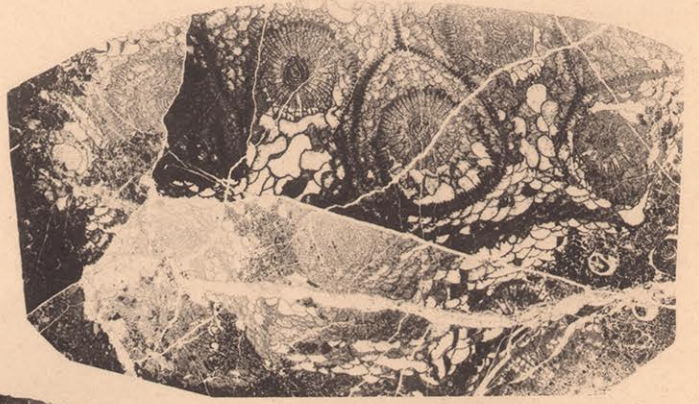
## Plate XI.

- Fig. 1a, b. *Polythecalis confluens* Yabe and Hayasaka.  $\times 3$ . (Upper Carboniferous.)  
Loc :—Hon-shan, Ton-ch'uan-hsien (Fui-tse), Prov. Yun-nan.  
雲南省, 東川縣(會澤), 砵山
- Fig. 2a, b, c, d. *Heterocaninia tholusitabulata* Yabe and Hayasaka.  $\times 1\frac{1}{2}$ . (Carboniferous.)  
Loc :—Hsia-lo shi-chiao, Chi-yang-hsien, Prov. Hu-nan.  
湖南省, 即陽縣, 下羅石橋
- Fig. 3a, b. *Amplexus* sp.  $\times 1\frac{1}{2}$ . (Carboniferous.)  
Loc :—Hung-hua-yuan, Tung-tzu-hsien, Prov. Kuei-chou  
貴州省, 桐梓縣, 紅花園
- Fig. 4a-c. *Thysanophyllum longiseptatum* Yabe and Hayasaka.  $\times 3$ . (Carboniferous.)  
Loc :—South of Yang-chia-yao, An hua-hsien, Prov. Hu-nan.  
湖南省, 安化縣, 揚家坳之南
- Fig. 5a-c. *Cyathophyllum* (s.s.) *heterophylloides* Frech.  $\times 1\frac{1}{2}$ . (Middle Devonian)  
Loc :—Lao cha-ting, Hsing-an-hsien, Prov. Kiang-si.  
江西省, 興安縣, 老茶亭
- Fig. 6a, b. *Clisiophyllum nodai* Yabe and Hayasaka.  $\times 1\frac{1}{2}$ . (Lower Carboniferous)  
Loc :—Hsin-hua-hsien, Prov. Hu peh.  
湖北省, 新化縣
- Fig. 7a, b. *Lithogroton irregulare* phill. var. *asiatica* Yabe and Hayasaka.  $\times 3$ .  
Loc :—Tibet.  
西藏
- Fig. 8. *Favosites gotlandicus* M.-Edw. et H.  $\times 6$ . (Gotlandian.)  
Loc :—No-lu ping, Hu ch'i, Hsing-shan-hsien, Prov. Hu peh.  
湖北省, 興山縣, 戶溪





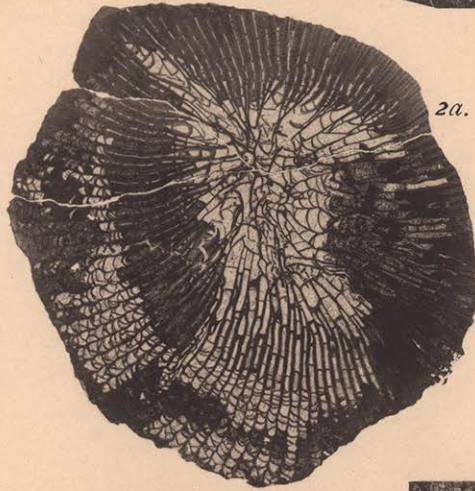
1b.



1a.



4a.



2a.



8.



5b.



2b.



4c.



4b.



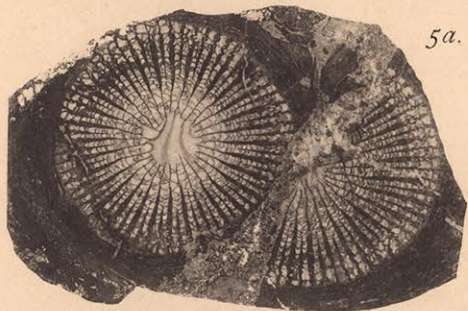
5c.



6b.



3a.



5a.



2d.



6a.



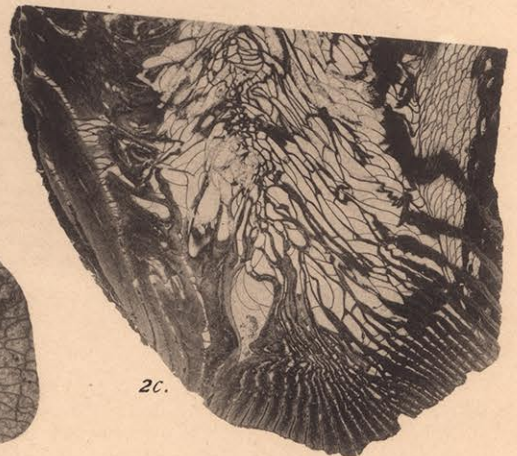
3b.



7a.



7b.



2c.



## Plate XII.

Fig. 1. *Syringopora* sp. *a.* ×8. See also pl., XIII., fig. 3.

Loc:—Between of San-lei-chu, Pei-shui and Pen-chiao-tze, Chao hua hsien,  
Prov. Ssu-ch'uan.

四川省, 昭化縣, 偏橋子, 白水三磊埧間

Fig. 2a, b. *Syringopora* sp. *β.* ×8.

Loc:—Pan-chi, near Shih-chiao, Hsin-hua-hsien, Prov. Hu nan.

湖南省, 新化縣, 石窖附近, 斑鷄

Fig. 3. *Striatopora cristata* Gurich. ×7. (Middle Devonian.)

Loc:—Lao chia-ting, Hsing-an-hsien, Prov. Kuang-si.

廣西省, 興安縣, 老茶亭

Fig. 4. *Syringopora* sp. *γ.* ×8.

Loc:—Kuei-yan-hsien, Prov. Hu-nan.

湖南省, 桂陽縣

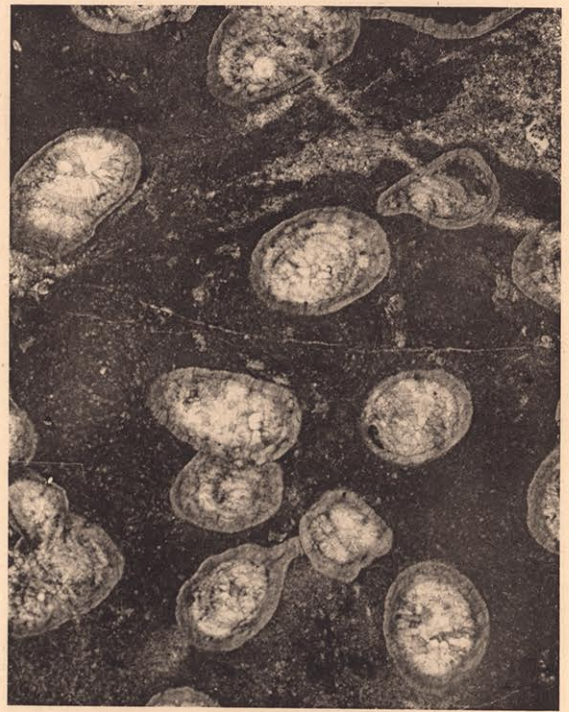




2a.



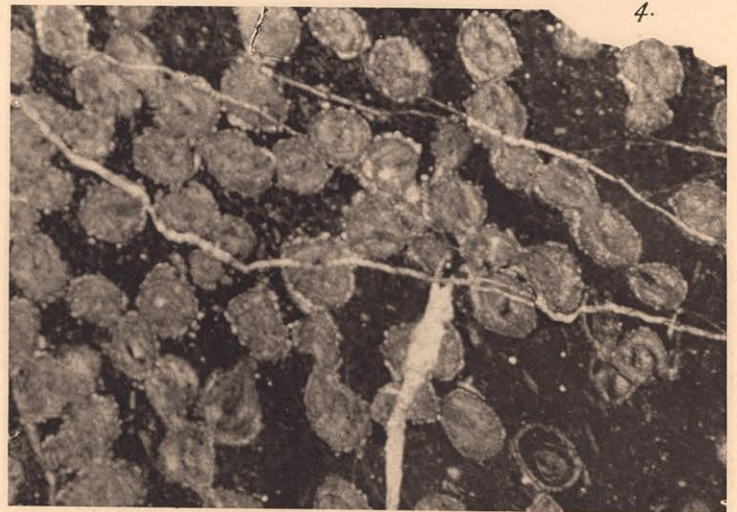
1.



2b.



3.



4.



Plate XIII.

Fig. 1, 1a. *Syringopora* sp. 7. ×8.

Loc :—Kuei-yang-hsien, Prov. Hu-nan.

湖南省, 桂陽縣

Fig. 2, 2a. *Lithostrotion ramosus* Romanowsky. 2a. ×2. (Upper Carboniferous.)

Loc :—Kuei-yang-hsien, Prov. Hu-nan.

湖南省, 桂陽縣

Fig. 3. *Syringopora* sp. *a*. ×8. See also pl. XII., fig. 1.

Loc :—Between of San-lei-chu, Pei-shui and Pen-chiao tze, Chao-hua-hsien,  
Prov. Ssu-ch'uan.

四川省, 昭化縣, 偏橋子, 白水三磊埧間







## Plate XIV.

- Fig. 1. *Macroporella sinica* Yabe.  $\times 70$ . (Lower Permian.)  
Loc :—Wang-wu, Kuang-feng-hsien, Prov. Kiang-si.  
江西省, 廣澤縣, 王武
- Fig. 2. *Macroporella sinica* Yabe.  $\times 70$ . (Lower Permian.)  
Loc :—Fu-shan coal field, Lung-chiang-chen, Yang-hsin-hsien, Prov. Hu-peh  
湖北省, 陽新縣, 龍港鎮, 富山炭田
- Fig. 3. *Macroporella tenuis* Yabe.  $\times 70$ . (Lower Permian.)  
Loc :—Wu-chai, En-an-hsien, Prov. Yun-nan.  
雲南省, 恩安縣, 五寨
- Fig. 4. *Macroporella Crassa* Yabe.  $\times 40$ . (Lower Permian.)  
Loc :—Wang-wu, Kuang-feng-hsien, Prov. Kiang-si.  
江西省, 廣澤縣, 王武
- Fig. 5. *Macroporella tenuis* Yabe.  $\times 70$ . (Lower Permian.)  
Loc :—Wu-chai, En-an-hsien, Prov. Yun-nan  
雲南省, 恩安縣, 五寨
- Fig. 6, and 7. Indeterminable.  $\times 70$ . (Lower Permian.)  
Loc :—Fu-shan coal field, Lung-chiang-chen, Yang-hsin-hsien, Prov. Hu-peh.  
湖北省, 陽新縣, 龍港鎮, 富山炭田







## Plate XV.

Fig. 1. *Syringopora* sp. nat. siz. See also pl. XX., fig. 4.

Loc :—Muei-yang, Prov. Hu-nan.

湖南省, 桂陽

Fig. 2a., b. *Alveolites suborbicularis* Lam. var. *minor* Frech?  $\times 7$ . (Devonian.)

Loc :—Hung-kou-chi, Ta-kuan-hsien, Prov. Yun-nan.

雲南省, 大關縣

Fig. 3a., b. *Chaetetes tenuissima* Frech on *Alveolites ramosum* Roemer. a, 3.5 : b,  
 $\times 7$ . See also pl. XX., fig. 1. (Devonian.)

Fig. 4. *Cyathophyllum heterophylloides* Frech. nat. siz. See also pl. XI., fig. 5.  
(Devonian.)

Loc :—Lao-cha-ting, Hsing-an-hsien, Prov. Kuang-si.

廣西省, 興安縣, 老茶亭

Fig. 5a.-c. *Polyrophe* (?) *dubia* Yabe.  $\times 2$ . (Ordovician.)

Loc :—No-lu-ping, Hu-ch'i, Hsing-shan-hsien, Prov. Hu-peh.

湖北省, 興山縣, 戶溪





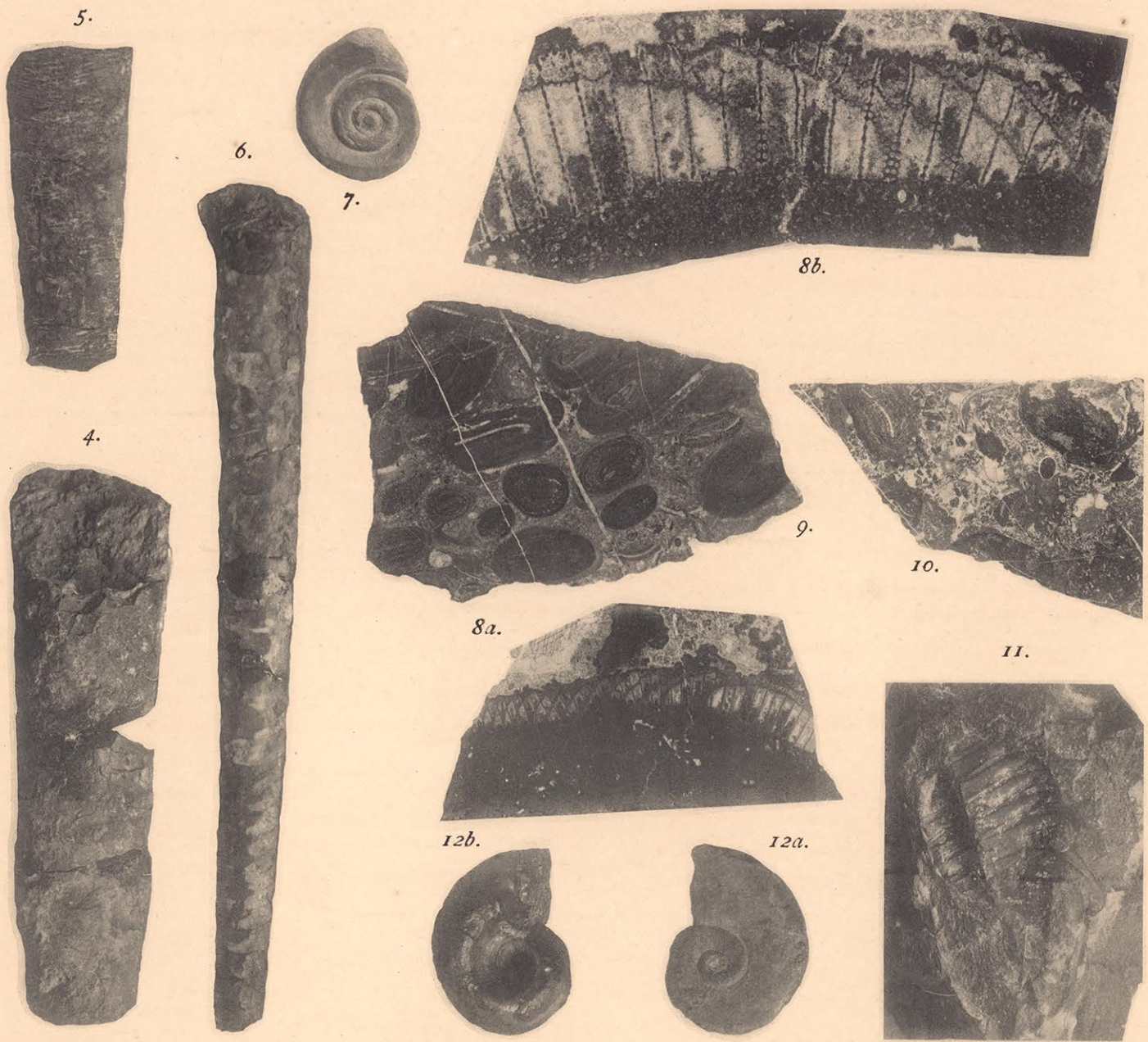
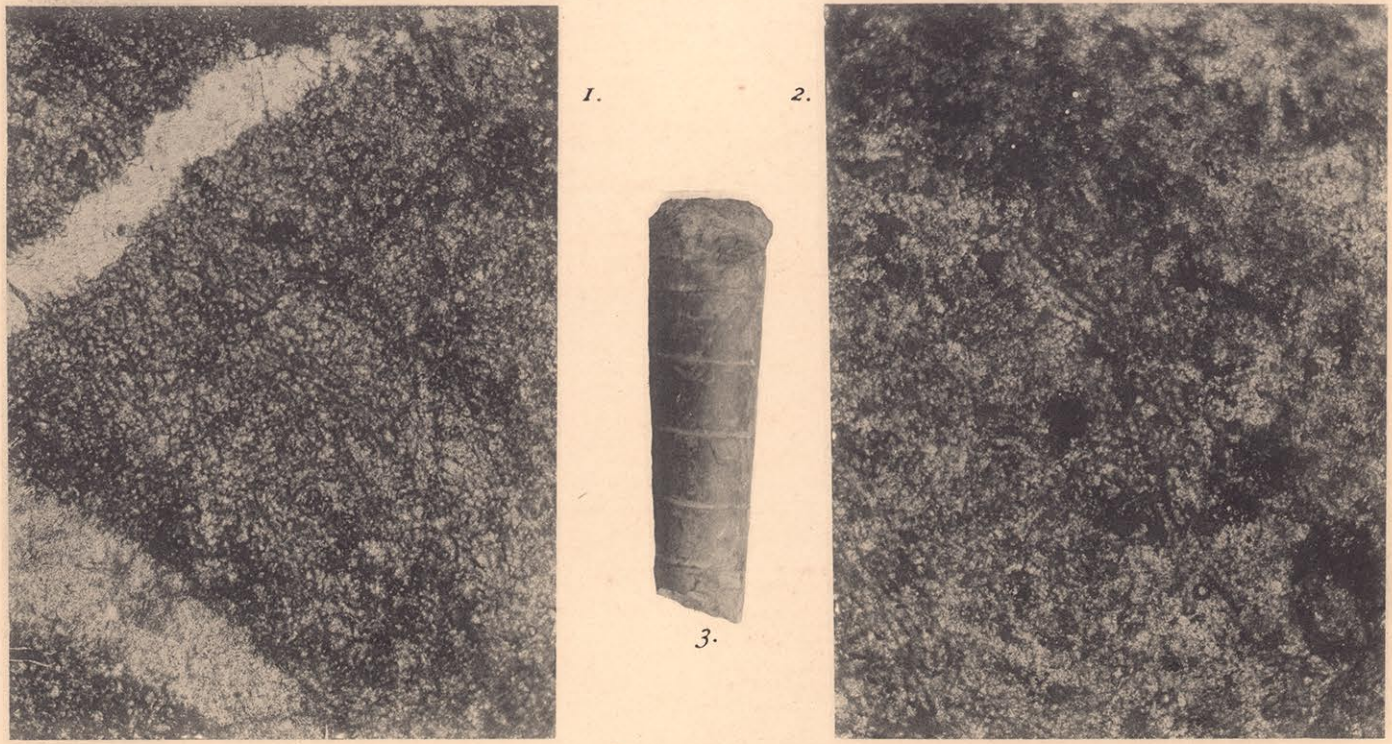
Ito Photo.



## Plate XVI.

- Fig. 1, 10. *Girvanella sinensis* Yabe. Fig. 1  $\times$  180. fig. 10  $\times$  2. (Ordovician.)  
Loc:—Liu chia-ho, Hsing-shan-hsien, Prov. Hu peh  
湖北省, 興山縣, 劉家河
- Fig. 2, 9. *Girvanella sinensis* Yabe. Fig. 2  $\times$  180, fig. 9  $\times$  2. (Ordovician.)  
Loc:—San-yu tung, Yi ch'ang-hsien, Prov. Hu peh.  
湖北省, 宜昌縣, 三遊洞
- Fig. 3, 4. *Orthoceras chinense* Foord. nat. siz. (Ordovician.)  
Loc:—Hsing-shan hsien, Prov. Hu-peh.  
湖北省, 興山縣
- Fig. 5. *Lituites (Ancistroceras) angelini* Ball. nat. siz. =pl. XXVII., fig. 4, a. b.  
(Ordovician.)  
Loc:—No lu ping, Hu ch'i, Hsing-shan-hsien, Prov. Hu-peh.  
湖北省, 興山縣, 戶溪
- \*Fig. 6. *Orthoceras* sp. nat. siz. =pl. XXVII., fig. 5. (Ordovician.)  
Loc:—Between Yang-ko lao, Prov. Ssu-ch'uan and Chiu-tien, Prov. Kuei-ch u.  
四川省, 楊哥老, 貴州省, 酒店壩間
- Fig. 7. *Raphistoma sinense* Frech. nat. siz. (Ordovician.)  
Loc:—No-lu-ping, Hu-ch'i, Hsing-shan-hsien, Prov. Hu-peh.  
湖北省, 興山縣, 戶溪
- Fig. 8a, b. *Coscinocyathus* cfr. *cancellatus* Bornemann. a.  $\times$  2; b.  $\times$  7. These are  
both sections. The whole body is shown on pl. XIX., fig. 3.  
Loc:—Between Hou-ping and Men chia-ho, Hsing-shan hsien, Prov. Hu-peh.  
湖北省, 興山縣, 後坪, 門家河間
- Fig. 11. A Trilobite, gen. et sp. indet. nat. siz. (Ordovician.)  
Loc:—Neighbourhood Lan-ch'i, Yuan-ling-hsien (Ch'en-chou), Prov. Hu-nan.  
湖南省, 沅陵縣(辰州), 蘭溪附近
- Fig. 12. *Maclurea neritoides* Eichwald. nat. siz. (Ordovician.)  
Loc:—No lu-ping, Hu-ch'i, Hsing-shan-hsien, Prov. Hu-peh.  
湖北省, 興山縣, 戶溪





Ito Photo.



## Plate XVII.

- Fig. 1. *Margaritina schwageri* Zittel. a,  $\times 8$ , b,  $\times 50$ , c,  $\times 240$ . (Lower Permian.)  
Loc:—Hsin-tan, Tzu-kuei hsien, Prov. Hu-peh.  
湖北省, 秭歸縣, 新灘
- Fig. 2. *Schwagerina princeps* Ehrenberg.  $\times 20$ . (Upper Carboniferous.)  
Loc:—East of Yang-chiao-shan, Wei ning-hsien, Prov. Kuei-chou.  
貴州省, 威寧縣, 羊角山ノ東
- Fig. 3. *Schwagerina princeps* Ehrenberg.  $\times 7$ . (Upper Carboniferous.)  
Loc:—East of Yang-chiao-shan, Wei-ning-hsien, Prov. Kuei-chou.  
貴州省, 威寧縣, 羊角山ノ東
- Fig. 4. *Schwagerina (Verbeekina) Verbeeki* Geintz.  $\times 8$ . (Lower Permian.)  
Loc:—Hsiao liao-shan, Yang-hsin-hsien, Prov. Hu-peh.  
湖北省, 陽新縣, 小了山
- Fig. 5. *Doliolina gigantea* Yabe.  $\times 8$ . (Lower Permian.)  
Loc:—Wu chai, En-an-hsien, Prov. Yun-nan.  
雲南省, 恩安縣, 五寨
- Fig. 6. *Fusulinella deprati* Yabe.  $\times 4$ . (Lower Permian.)  
Loc:—Fu-shan coal field, Lung-chiang chen, Yang-hsin-hsien, Prov. Hu-peh.  
湖北省, 陽新縣, 龍港鎮, 富山炭田
- Fig. 7. *Doliolona lepida* Schwager and *Fusulinella sphaerica* Yabe. a,  $\times 8$ , b,  $\times 4$ .  
(Lower Permian.)  
Loc:—Hou chang, Wei-ning-hsien, Prov. Kuei-chou.  
貴州省, 威寧縣, 后場
- Fig. 8. *Bigennerina yamadai* Yabe.  $\times 7$ . (Upper Carboniferous.)  
Loc:—East of Yang chiao-shan, Wei-ning-hsien, Prov. Kuei-chou.  
貴州省, 威寧縣, 羊角山ノ東







## Plate XVIII

- Fig. 1. *Tentaculites* sp. pl. nat. siz. (Devonian.)  
Loc:—Shuang-chin-t'ang, Tao-hsien, Prov. Hu-nan.  
湖南省, 道縣, 雙錦堂
- Fig. 2a, b. *Discoceras eurasiaticum* Frech. nat. siz. (Ordovician.)  
Loc:—Lower bed No-lu-ping, Hu-ch'i, Hsing-shan-hsien, Prov. Hu-peh.  
湖北省, 興山縣, 戶溪
- Fig. 3. *Orthoceras* (?) sp. indet. nat. siz. =pl. XXVII., fig. 2. (Ordovician.)  
Loc:—Lower bed No-lu-ping, Hu-ch'i, Hsing-shan-hsien, Prov. Hu-peh.  
湖北省, 興山縣, 戶溪
- Eig. 4. *Monotrypa parasitica* Kayser.  $\times 7$ . (Upper Devonian.)  
Loc:—Ling-ling-hsien, Hu-nan.  
湖南省, 零陵縣
- Fig. 5. *Asaphus* sp. A pygidium. nat. siz. See also pl. XIX., fig. 6. (Ordovician.)  
Loc:—Pan-tse-ya, Hu-ch'i, Hsing-shan-hsien, Prov. Hu-peh.  
湖北省, 興山縣, 戶溪, 潘子埡
- Fig. 6. *Pseudomonotis griesebachii* Bittner var. *concentrica* Yabe. nat. siz. See also pl. XIX., fig. 14. (Triassic.)  
Loc:—Tieh-shih-k'ou, Hsin-f'eng-hsien, Prov. Kiang-si.  
江西省, 信豐縣, 鐵石口
- Fig. 7. *Trochoceras* sp. indet. nat. siz. (Gotlandian.)  
Loc:—Kuang ke-tsao, Ta-kuan-hsien, Prov. Yun-nan.  
雲南省, 大關縣, 黃葛漕
- Fig. 8. *Orthoceras* sp. indet. nat. siz. (Gotlandian.)  
Loc:—Hai-lung-ch'i, Ta-kuan-hsien, Prov. Yun-nan.  
雲南省, 大關縣, 回龍溪
- Fig. 9. *Isotelus usuii* Yabe. nat. siz. See also pl. XIX., fig. 8. (Ordovician.)  
Loc:—No-lu-ping, Hu-ch'i, Hsing-shan-hsien, Prov. Hu-nan.  
湖南省, 興山縣, 戶溪
- Fig. 10. *Illænus sinensis* Yabe. nat. siz. (Ordovician.)  
Loc:—No-lu-ping, Hu-ch'i, Hsing-shan-hsien, Prov. Hu-nan.  
湖南省, 興山縣, 戶溪
- Fig. 11. *Polypora*? sp. nat. siz. (Permian.)  
Loc:—Wa-chiang, Yi-ch'un-hsien, Prov. Kiang-si.  
江西省, 宜春縣, 瓦江
- Fig. 12. *Actinoceras* (*Ormoceras*) sp. indet. nat. siz. See also pl. XIX., fig. 9. (Ordovician.)  
Loc:—Pan-tse-ya, Hu-ch'i, Hsing-shan-hsien, Prov. Hu-peh.  
湖北省, 興山縣, 戶溪, 潘子埡
- Fig. 13. *Asaphus* sp. nat. siz. (Ordovician.)  
Loc:—No-lu-ping, Fu-ch'i, Hsing-shan-hsien, Prov. Hu-nan.  
湖南省, 興山縣, 戶溪
- Fig. 14. *Gyrtocheras* (*Meloceras*) *asiaticum* Yabe. nat. siz. See also pl. XXVII., fig. 7. (Ordovician.)  
Loc:—Pan-tse-ya, Hu-ch'i, Hsing-shan-hsien, Prov. Hu-peh.  
湖北省, 興山縣, 戶溪, 潘子埡







## Plate XIX.

- Fig. 1. *Orthotheca glabra* Walcott.  $\times$  ca. 5. (Middle Cambrian.)  
 Loc:—Ta-hsi-tau, Ton-ch'uan-hsien (Hui-tso), Prov. Yun-nan.  
 雲南省, 東川縣(會澤)
- Fig. 2a, b. *Helcionella rugosa* (Hall) *paupera* Billings. a, side view,  $\times$  ca. 5, b, outline of the aperture. (Middle Cambrian.)
- Fig. 3. *Coscinocathus* cf. *cancellatus* Bornemann. Cambrian, nat. siz.  
 Loc:—Betwen Hou-ping and Men chia-ho, Hsing-shan-hsien, Prov. Hu peh.  
 (see also pl. XVI., fig. 8)  
 湖北省, 興山縣, 後坪, 門家河間
- Fig. 4. *Batostomella antiqua* Yabe.  $\times$  29. Ordovician. (see also pl. XXVIII., fig. 3.)  
 Loc:—Huang chia-chang, Yi-chang-ksien, Prov. Hu-peh.  
 湖北省, 宜昌縣, 黃家場
- Fig. 5. *Discoceras* sp. indet. Ordovician. nat. siz. (see also pl. XXVII., fig. 5.)  
 Loc:—No lu ping, Hu ch'i, Hsing-shan-hsien, Prov. Hu-peh.  
 湖北省, 興山縣, 戶溪
- Fig. 6a, b. *Asaphus* sp. indet. Ordovician. nat. siz. (see also pl. XVIII., fig. 5.)  
 Loc:—Pan-tse-ya, Hu-ch'i, Hsing-shan-hsien, Prov. Hu-peh.  
 湖北省, 興山縣, 戶溪, 潘子壩
- Fig. 7a, b. *Eceyliopecter* *abendanoni* Frech. Ordovician. (Ordovician.)  
 Loc:—No lu-pin. Hu ch'i, Hsing-shan-hsien, Prov. Hu-peh.  
 湖北省, 興山縣, 戶溪
- Fig. 8. *Isotelus usui* Yabe. (Ordovician.) nat. siz. (see also Pl. XVIII., fig. 9.)  
 Loc:—No-lu-ping, Hu ch'i, Hsing-shan-hsien, Prov. Hu-peh.  
 湖北省, 興山縣, 戶溪
- Fig. 9. *Actinoceras* (*Ormoceras*) sp. indet. nat. siz. (Ordovician.) (see also Pl. XVIII., fig. 12.)  
 Loc:—No-lu-ping, Hu-ch'i, Hsing-shan-hsien, Prov. Hu-peh.  
 湖北省, 興山縣, 戶溪
- Fig. 10 a, b. *Orthoceras* sp. indet. (Ordovician.)  
 Loc:—No-lu-ping, Hu-ch'i, Hsing-shan-hsien, Prov. Hu-peh.  
 湖北省, 興山縣, 戶溪
- Fig. 11. *Striatopora crietata* Gurich (Devonian.) (see also Pl. XVI., fig. 3.)  
 Loc:—Lao chia-ting, Hsing an-hsien, Prov. Kuang-si.  
 廣西省, 興安縣, 老茶亭
- Fig. 12 a, b. *Naticopsis* sp. indet. nat. siz. (Permian.)  
 Loc:—Mei-tse-kou, south of Wu-ch'ang, Prov. Hu peh.  
 湖北省, 武昌の南, 梅子溝
- Fig. 13. *Margaritina schwageri* Zittel.  $\times$  3. (Permian.)  
 Loc:—Hsin-tan, Tzu-kuei-hsien, Prov. Hu-peh.  
 湖北省, 秭歸縣, 新灘
- Fig. 14. *Pseudomonotis griesebachi* Bittner var. *concentrica*, Yabe. nat. siz. (Lower-Triassic) (see also pl. XVIII., fig. 6.)  
 Loc:—T'ieh-shih-k'ou, Hsin-peo-hsien, Prov. Kiang-si.  
 江西省, 信豐縣, 鐵石口
- Fig. 15. *Dinarites* sp. indet. nat. size. (Lower Triassic.)  
 Loc:—Between Tzu-chiang-hsien (Gai chou) and Lung-chang Prov. kuei-chou.  
 貴州省, 紫江縣(開州)附近
- Fig. 16. a—c. *Pseudohalorites subglobosus* Yabe. nat. siz. (Permian—Lower Triassic).  
 Loc:—Hsing-tan-heien, Prov. Hu-peh.  
 湖北省, 湘潭縣
- Fig. 17 a—c. 18. *Pseudohalorites celestris* Yabe. nat. siz. (Permian.—Lower Triassic).  
 Loc:—Hsing-tan-hsien, Prov. Hu peh.  
 湖北省, 湘潭縣
- Fig. 19 a, b. *My ophoria* sp. indet. nat. siz. (Lower Triassic)  
 Loc:—Tzu chia-hsien (Gai-chou), Prov. Kuei chou.  
 貴州省, 紫紅縣(開州)







## Plate XX

Fig. 1. *Alveolites suborbicularis* Tam var. *minor* Frech?  $\times 20$ . See also pl. XV., fig. 2.  
(Devonian.)

Loc:—Ta-kuan-hsien, Prov. Fuh-k'ien.

福建省, 大關縣

Fig. 2. *Amblysiphonella chinensis* Hayasaka. nat. siz. (Perman.)

Loc:—Liang-shan coal field, T'ung-lu-hsien, Prov. Hsi-chiang.

浙江省, 桐廬縣, 良山炭田

Fig. 3. *Amphipora ramosa* Phill.  $\times 7$ . (Middle Devonian.)

Loc:—Kuei-lin, Prov. Kuang-si.

廣西省, 桂林

Fig. 4. *Syringopora* sp.  $\times 8$ . See also pl. XV., fig. 1. (Carboniferous.)

Loc:—Kuei-yang-hsien, Prov. Kiang-si.

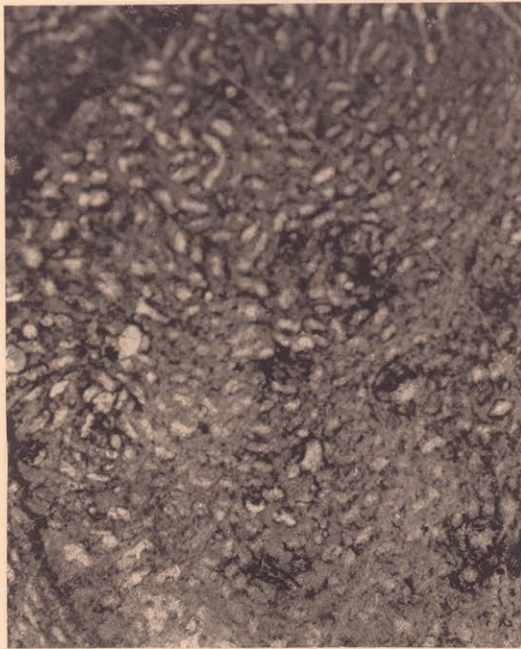
江西省, 桂陽縣

Fig. 5a, b. Indeterminable.  $\times 2\frac{1}{2}$ .

Loc:—Hua-shih-t'ang, Chi-an-hsien, Prov. Kiang-si.

江西省, 吉安縣, 花石塘





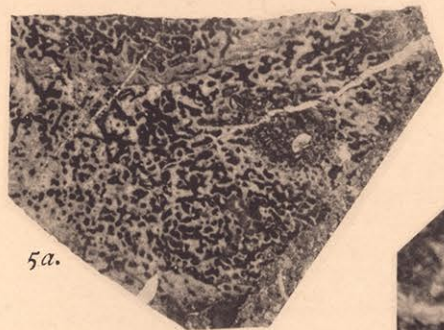
1.



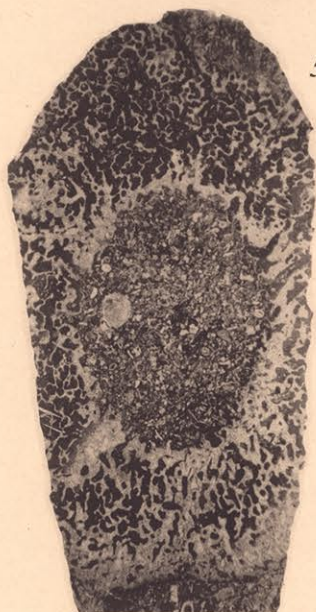
3.



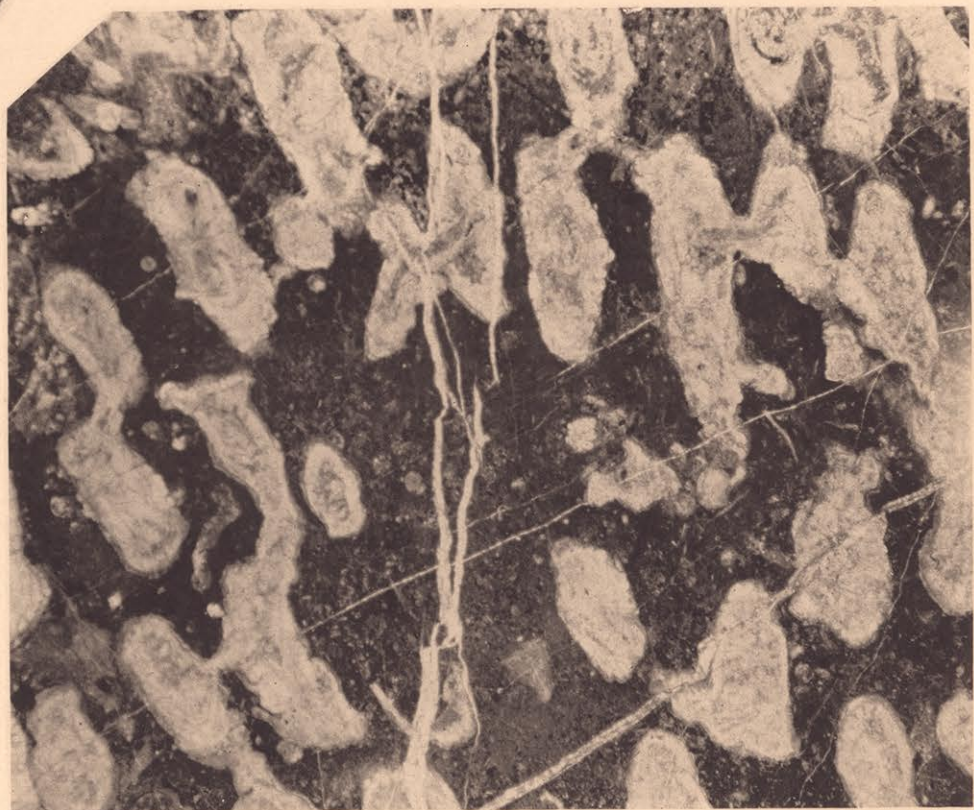
2.



5a.



5b.



4.



## Plate XXI

Fig. 1, 2. *Lingulina*? sp. highly magnified. (Devonian.)

Loc :—Kuei-lin, Prov. Kuang-si.

廣西省, 桂林

Fig. 3. *Nodosaria* sp. highly magnified. (Devonian).

Loc :—Kuei-lin, Prov. Kuang-si.

廣西省, 桂林

Fig. 4, 4a. *Fusulina sino indica* Yabe. 4,  $\times 3$ ; 4a,  $\times 7$ . (Upper Carboniferous.)

Loc :—Ch'a-mu-k'eng, Fen-yi-hsien, Prov. Kiang-si.

江西省, 分宜縣, 茶木坑

Fig. 5. *Doliolina gigantea* Yabe.  $\times 20$ . This is the reproduction of fig. 2, pl. III. of Yabe's "A Contribution." (Permian.)

Loc :—Wu-chai, En-an-hsien, Prov. Yun-nan.

雲南省, 恩安縣, 五寨

Fig. 6. *Fusulina* sp. indet.  $\times 7$ . (Lower Permian.)

Loc :—Chi-hai, Ton-ch'uan-hsien (Fui-tse), Prov. Yun nan.

雲南省, 東川縣(會澤), 耆海

Fig. 7. *Solenopora*? sp.  $\times 50$ . (Devonian.)

Loc :—Hung-kuo-chi, in the neighborhood of Ta-kuan-hsien, Prov. Yun nan.

雲南省, 大關縣附近





1.



2.



4.



6.

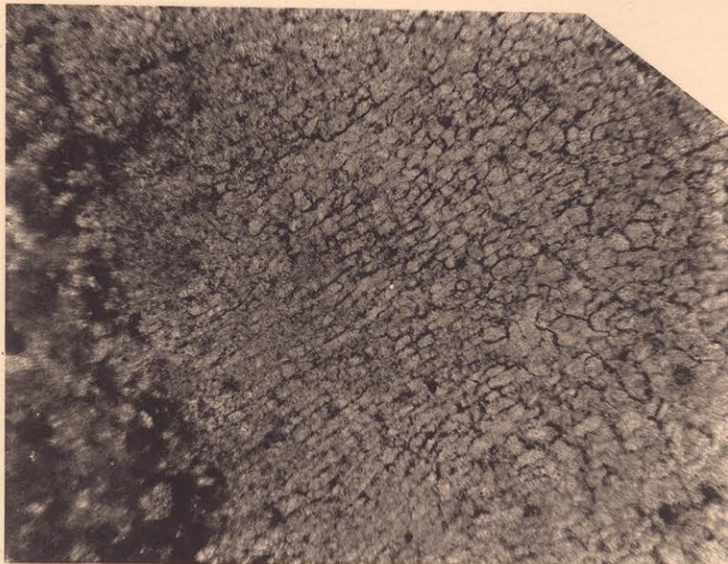


3.

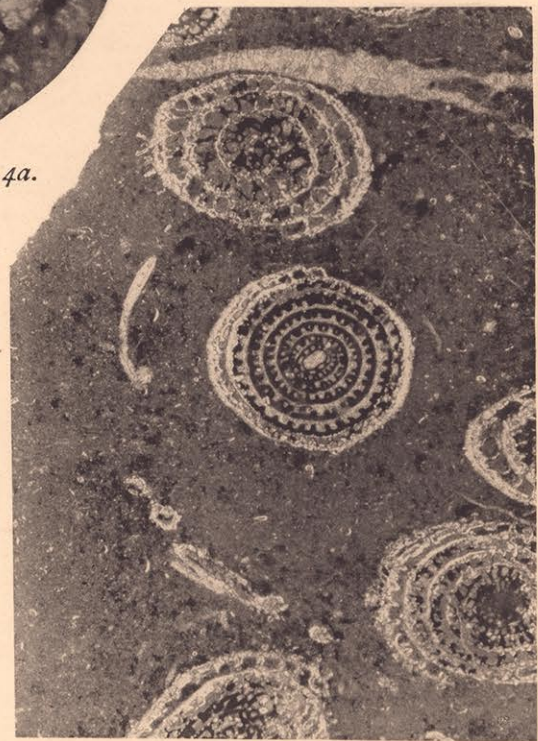


5.

7.



4a.

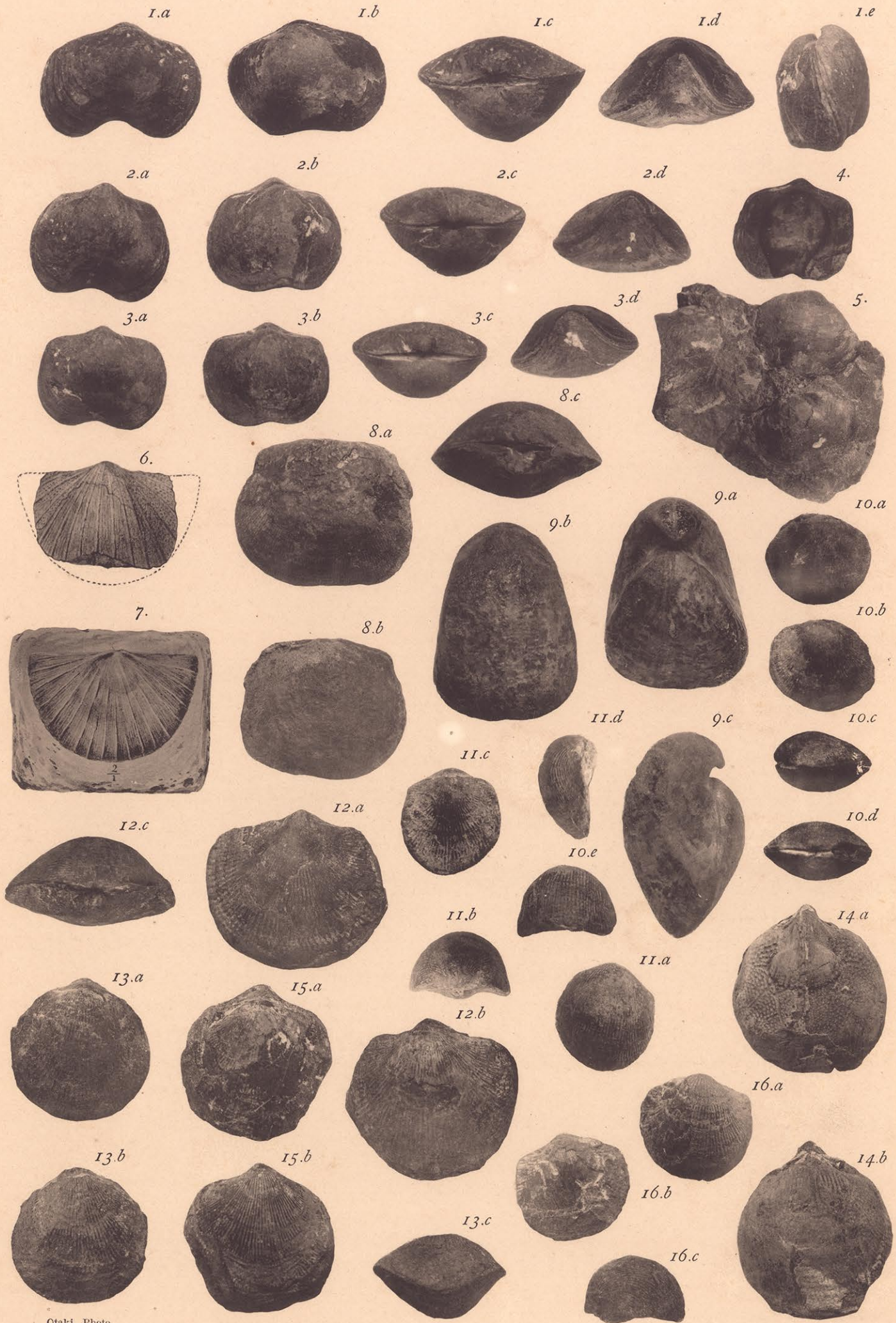




· Plate XXII

- Fig. 1a-4. *Triplecia poloi* Martelli. nat. siz. (Ordovician.)  
Loc :—No-lu-ping, Hu-ch'i, Hsing-shan-hsien, Prov. Hu-peh.  
湖北省, 興山縣, 戶溪
- Fig. 5. *Triplecia poloi* Martelli. nat. siz. (Ordovician.)  
Loc :—Kao-huang-ling, Hsing-shan-hsien, Prov. Hu-peh.  
湖北省, 興山縣, 高黃嶺
- Fig. 6. *Plectambonites* cf. *sericeus* Lowerby. × 2. (Ordovician.)  
Loc :—Kao huang-ling, Hsing-shan-hsien, Prov. Hu peh.  
湖北省, 興山縣, 高黃嶺
- Fig. 7. *Plectambonites sericeus* Lowerby. nat. siz. Reproduced from the picture of the specimen from Shan-ung given by Lorenz for comparison.
- Fig. 8. *Orthisina* cf. *hemipronites* (v. Buch) Frech. nat. siz. (Ordovician.)  
Loc :—No-lu-ping, Hu-ch'i, Hsing-shan-hsien, Prov. Hu-peh.  
湖北省, 興山縣, 戶溪
- Fig. 9a-c. *Pentamerus borealis* Eichwald. nat. siz. (Gotlandian.)  
Loc :—No-lu-ping, Hu-ch'i, Hsing-shan-hsien, Prov. Hu peh.  
湖北省, 興山縣, 戶溪
- Fig. 10a-d. *Dalmanella aequivalvis* Davidson. nat. siz. (Gotlandian.)  
Loc :—No-lu-ping, Hu-ch'i, Hsing-shen-hsien, Prov. Hu-peh.  
湖北省, 興山縣, 戶溪
- Fig. 11a-d. *Atrypa reticularis* Lin. var. *richthofeni* Kayser em. Frech (=fig. 16a, b: pl. XXIII., fig. 1a, b.) nat. siz. (Middle Devonian.)  
Loc :—San-lei-pa, Chao-hua-hsien, Prov. Ssu-chuan.  
四川省, 昭化縣, 三磊垭
- Fig. 12a-15b. *Atrypa reticularis* Linn. var. *desquamata* Lowerby. nat. siz. (Middle Devonian.)  
Loc :—Ning-chang-hsien, Prov. Shen-si.  
陝西省, 寧羗縣





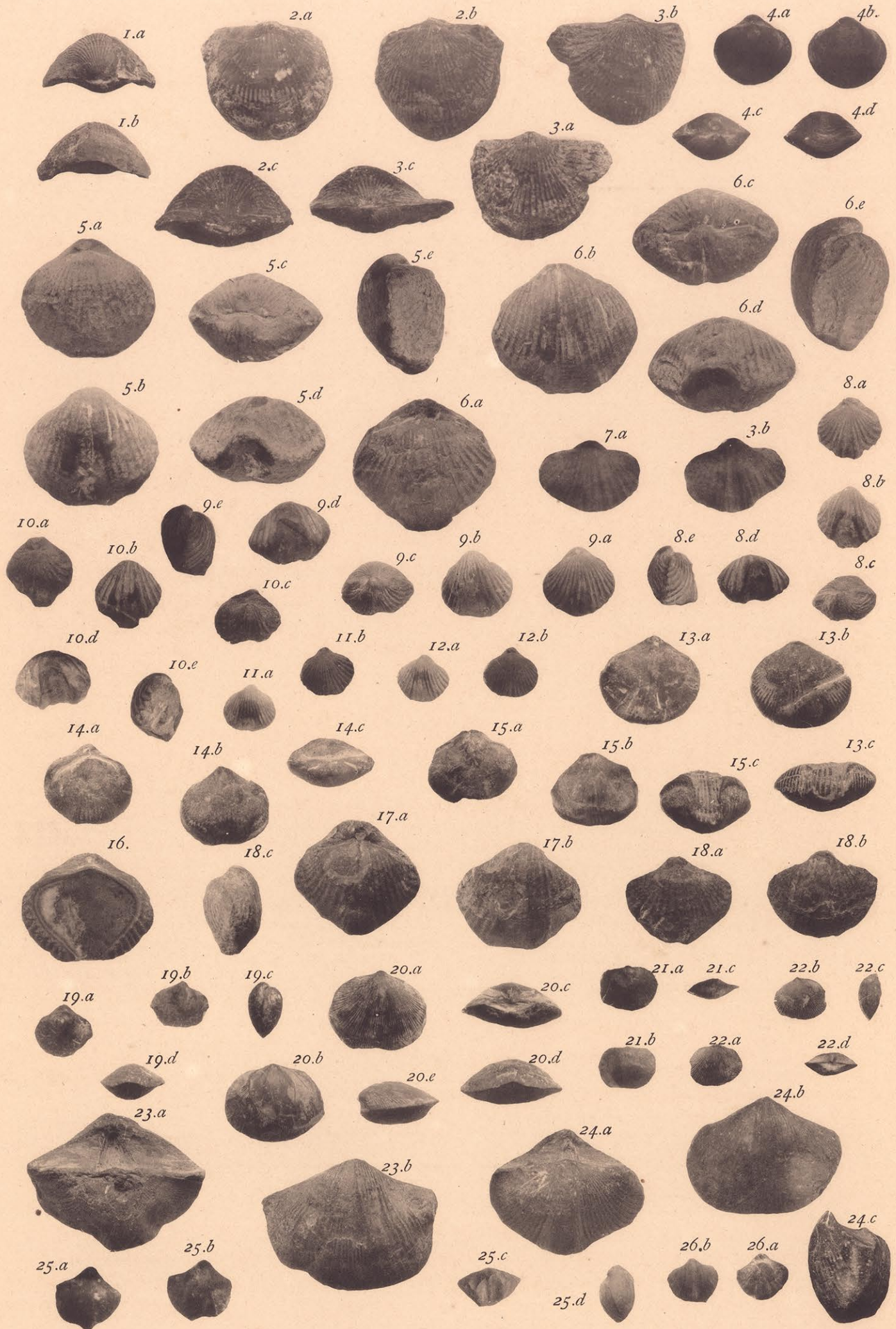
Otaki Photo.



## Plate XXIII

- Fig. 1. *Atrypa reticularis* Linn. var. *richthofeni* Kayser em. Frech. nat. siz. =pl. XXII., figs. 11 and 16. (Middle Devonian.)  
Loc:—San-lei-pa, Chiao-hua-hsien, Prov. Ssu-ch'uan.  
四川省, 昭化縣, 三磊垭
- Fig. 2a-3c. *Atrypa reticularis* Linn. var. *auriculata* Hayasaka. nat. siz. (Middle Devonian.)  
Loc:—Ning-chang-hsien, Prov. Shen-si.  
陝西省, 寧羗縣
- Fig. 4a-d. *Athyris concentrica* v. Buch. =fig. 19. (Middle Devonian.)  
Loc:—Between Mien-tien and Shan-shui-tang, Nan ning, Prov. Kiang-si.  
廣西省, 南寧, 响水塘麵店間
- Figs. 5a-6c. *Athyrisina squamosa* Hayasaka. See also figs. 16 and 17. nat. siz. (Middle Devonian.)  
Loc:—Pen-chiao tzu, Chao-hua-hsien, Prov. Ssu-ch'uan.  
四川省, 昭化縣, 偏橋子
- Fig. 7a, b. *Athyrisina squamosa* Hayasaka var. *rhomboidalis* Hayasaka. See also fig. 18. nat. siz. (Middle Devonian.)  
Loc:—Pen-chiao-tzu, Chao-hua-hsien, Ssu-ch'uan.  
四川省, 昭化縣, 偏橋子
- Figs. 8a-12b. *Athyrisina minor* Hayasaka. nat. siz. (Middle Devonian.)  
Loc:—Between Mien-tien and Shan-shui-tang, Nan-ning, Prov. Kuang-si.  
廣西省, 南寧, 响水塘麵店間
- Figs. 13a-15d. *Phynchonella parallelepipedata* Bronn. nat. siz. (Middle Devonian.)  
Loc:—Ning-chang-hsien, Prov. Shen-si.  
陝西省, 寧羗縣
- Figs. 16a-17b. *Athyrisina squamosa* Hayasaka. See also figs. 5 and 6. nat. siz. (Middle Devonian.)  
Loc:—Pen-chiao-tzu, Chao-hua-hsien, Ssu-ch'uan.  
四川省, 昭化縣, 偏橋子
- Figs. 18a-c. *Athyrisina squamosa* Hayasaka var. *rhomboidalis* Hayasaka. See also fig. 7. (Middle Devonian.)  
Loc:—Pen-chiao-tzu, Chao-hua-hsien, Ssu-ch'uan.  
四川省, 昭化縣, 偏橋子
- Figs. 19a-d. *Athyris concentrica* v. Buch. See also fig. 4. nat. siz. (Middle Devonian.)  
Loc:—Mien-tien, Nan-ning, Prov. Kuang-si.  
廣西省, 南寧, 麵店
- Figs. 20a-21e. *Dalmanella striatula* Schlotheim. nat. siz. (Upper Devonian.)  
Loc:—Mien-tien, Nan-ning-hsien, Prov. Kuang-si.  
廣西省, 南寧, 麵居
- Fig. 22a-d. *Dalmanella striatula* Schlotheim. (Middle Devonian.)  
Loc:—Between Wei-ning and Tou-tang, Prov. Kuei-chou.  
貴州省, 威寧, 頭塘間
- Figs. 23a-24c. *Spirifer disjunctus* Sow. var. *subarchici* Martelli. See also pl. XXIV., fig. 1. nat. siz. (Upper Devonian.)  
Loc:—Neighborhood of Ling-ling-hsien, Prov. Hu-nan.  
湖南省, 零陵縣附近
- Figs. 25a-26b. *Spirifer ziczac* Roemer var. *undecimplicate* Roemer em. Seupin. Fig. 26. represents a younger form. (Middle Devonian.)  
Loc:—Between Mien-tien and Shan-shui-tang, Nan-ning, Prov. Kuang-si.  
廣西省, 南寧, 麵店响水塘間











## Plate XXIV

- Fig. 1a-c. *Spirifer disjunctus* Low. var. *sub-archiaci* Martelli. nat. siz. See also pl. XXIII., figs. 23, 24. (Upper Devonian.)  
Loc:—Unknown.  
產地不明
- Fig. 2. *Spirifer disjunctus* Low. var. *verneuili* Murchison. nat. siz. (Upper Devonian.)  
Loc:—Between Tou-tang and Wei-ming, Prov. Kuei-chou.  
貴州省, 頭塘, 威寧間
- Fig. 3a-c. *Spirifer disjunctus* Low. var. *vicari* Pellizzari. nat. siz. (Upper Devonian.)  
Loc:—Unknown.  
產地不明
- Fig. 4a-c. *Spirifer disjunctus* Low. var. *clonsdalei* (Murchison) Martelli. nat. siz. (Upper Devonian.)  
Loc:—Unknown.  
產地不明
- Fig. 5a, b. *Spirifer disjunctus* Low. var. *gortani* Pellizzari. nat. siz. (Upper Devonian.)  
Loc:—Unknown.  
產地不明
- Figs. 6a-7. *Orthotetes crenistria* (Phillips) Frech. nat. siz. (Lower Carboniferous.)  
Loc:—East of Tou-tang, Prov. Kuei-chou.  
貴州省, 頭塘ノ東
- Figs. 8a-9b. *Spirifer bisulcatus* Sow. nat. siz. The specimen 9 is compressed antero-posteriorly. (Lower Carboniferous.)  
Loc:—Huang-tu-p'u, Prov. Hu nan.  
湖南省, 黃土舖
- Figs. 10a-14e. *Athyris royssii* l' Eveille. nat. siz. (Lower Carboniferous.)  
Loc:—Huang-tu-p'u, Prov. Hu-nan.  
湖南省, 黃土舖
- Figs. 15-23. *Rhynchonella pleurodon* Phillips. 15-18 are the reproductions from the Belgian forms from the work of de Koninck. nat. siz. (Lower Carboniferous.)  
Loc:—Huang-tu-p'u Prov. Hu-nan.  
湖南省, 黃土舖
- Figs. 24-25. *Orthotetes ruber* Frech. nat. siz. (Lower Permian.)  
Loc:—Sung-shou-kuan, Chang-yi-hsien, Prov. Yun-nan.  
雲南省, 霑益縣, 松韶關



## Plate XXV

- Fig. 1a-d. *Orthotetes armeniaca* Arthaber. nat. siz. (Upper Carboniferous—Permian.)  
 Loc:—Mei-tzu-kou, south of Wu-chang, Prov. Hu-peh.  
 湖北省, 武昌ノ南, 梅子溝
- Fig. 2a-c. *Schuchertella* sp. prob. nov. nat. siz. (Upper Carboniferous—Permian.)  
 Loc:—South of Tung-kung-su, Tung-yi-hsien, Prov. Kuei-chou.  
 貴州省, 遵義縣, 董公寺ノ南
- Fig. 3. *Dalmanella indica* Waagen. nat. siz. (Upper Carboniferous—Permian.)  
 Loc:—Mei-tzu-kou, south of Wu-chang, Prov. Hu-peh.  
 湖北省, 武昌ノ南, 梅子溝
- Fig. 4a-c. *Athyris protea* Abich var. *armeniaca* Arthaber em. Frech. nat. siz. (Permian.)  
 Loc:—South of Tung-kung-su, Tung-yi-hsien, Prov. Kuei-chou.  
 貴州省, 遵義縣, 董公寺ノ南
- Fig. 5a-b. *Spirifer* (*Reticularia*) *inequilateralis* Gemmellaro. nat. siz. (Permian.)  
 Loc:—Tung-tsu-hsien, Prov. Kuei-chou.  
 貴州省, 桐梓縣
- Fig. 6a-c. *Productus punctatus* Martin. nat. siz. (Upper Carboniferous—Permian.)  
 Loc:—Mei-tzu-kou, south of Wu-chang, Prov. Hu-peh.  
 湖北省, 武昌ノ南, 梅子溝
- Fig. 7. *Productus Sumatrensis* Römer var. *palliata* Kayser em. Fliegel. See also pl. XXVI., fig. 6. nat. siz. (Upper Carboniferous—Permian.)  
 Loc:—South of Pei-yen, Pi-chieh hsien, Prov. Kuei-chou.  
 貴州省, 畢節縣, 白岩ノ南
- Fig. 8a-b. *Productus sumatrensis* Römer var. *palliata* Kayser em. Fliegel. nat. siz. (Upper Carboniferous—Permian.)  
 Loc:—Tong-hu-hsien, Prov. Hu-peh.  
 湖北省, 東湖縣
- Fig. 9a-b. *Productus sumatrensis* Römer var. *palliata* Kayser em. Fliegel. nat. siz. (Upper Carboniferous—Permian.)  
 Loc:—Mei-tzu-kou, south of Wu-chang, Prov. Hu-peh.  
 湖北省, 武昌ノ南, 梅子溝
- Fig. 10. *Productus* cfr. *sino-indicus* Frech. nat. siz. (Permian.)  
 Loc:—Chiu-tsai-tang, Tung-chang-hsien, Prov. Hu-peh.  
 湖北省, 通城縣
- Fig. 11a-b. *Productus Yabei* Frech and *Athyris protea* Abich var. *armeniaca* Arthaber em. Frech. nat. siz.  
 Loc:—South of Tung-kung-su, Tung yi-hsien, Prov. Kuei chou.  
 貴州省, 遵義縣, 董公寺ノ南
- Fig. 12. *Lyttonia richthofeni* Kayser em. Hayasaka. nat. siz. A cast of the inner surface of a ventral valve. This specimen is from the Kitakami mountains in Japan, given here for comparison. (Permian.)
- Fig. 13. *Lyttonia richthofeni* Kayser em. Hayasaka. nat. siz. Inside of a dorsal valve. (Permian.)  
 Loc:—Tung-tzu-hsien, Prov. Kuei-chou.  
 貴州省, 桐梓縣
- Fig. 14a-d. *Productus vishnu* Waagen var. *radiata* Hayasaka. nat. siz. (Permian.)  
 Loc:—Mei-tzu-kou, south of Wu-chang, Prov. Hu-peh.  
 湖北省, 宜昌ノ南, 梅子溝
- Figs. 15a-16. *Productus* (*Morginifera*) *spinuloso-costatus* Abich. nat. siz. drawn by Mr. Ebina. Fig. 16 is the reproduction from Richthofen's China, vol. V. pl. 27., fig. 2b. (Upper Carboniferous—Permian.)







## Plate XXVI

Figs. 1-2. *Productus paviei* Mansuy var. *hsinhuænsis* Hayasaka. nat. siz. One of the pectinate deductors is seen on the right hand side of fig. 2. (Permian.)

Loc:—Hsing-hua-hsien, Prov. Hu-nan.

湖南省, 新化縣

Figs. 3-4b. *Productus cora* (d'orbigny) Diener. nat. siz. (Uppermost Carboniferous—Permian.)

Loc:—Neighbourhood of Ho-chang, Wei ning-hsien, Prov. Kuei-chou.

貴州省, 威寧縣, 后場附近

Fig. 5. *Productus* aff. *yunnanensis* von Loczy. nat. siz. (Upper Carboniferous—Permian.)

Loc:—Ai-chia-ping, Wei-ning-hsien, Prov. Kuei-chou.

貴州省, 威寧縣, 艾家坪

Fig. 6. *Productus sumatrensis* Rœmer var. *palliata* Kayser em. Fliegel. See also pl. XXV., figs. 7-9. (Upper Carboniferous—Permian.)

Loc:—North of Pei-yen, Pi-chieh-hsien, Prov. Kuei-chou.

貴州省, 畢節縣, 白岩ノ北

Figs. 7-10. *Chonetes barusiensis* Davidson. nat. siz. (Permian.)

Loc:—Tung-tzu-hsien, Prov. Kuei-chou.

貴州省, 桐梓縣



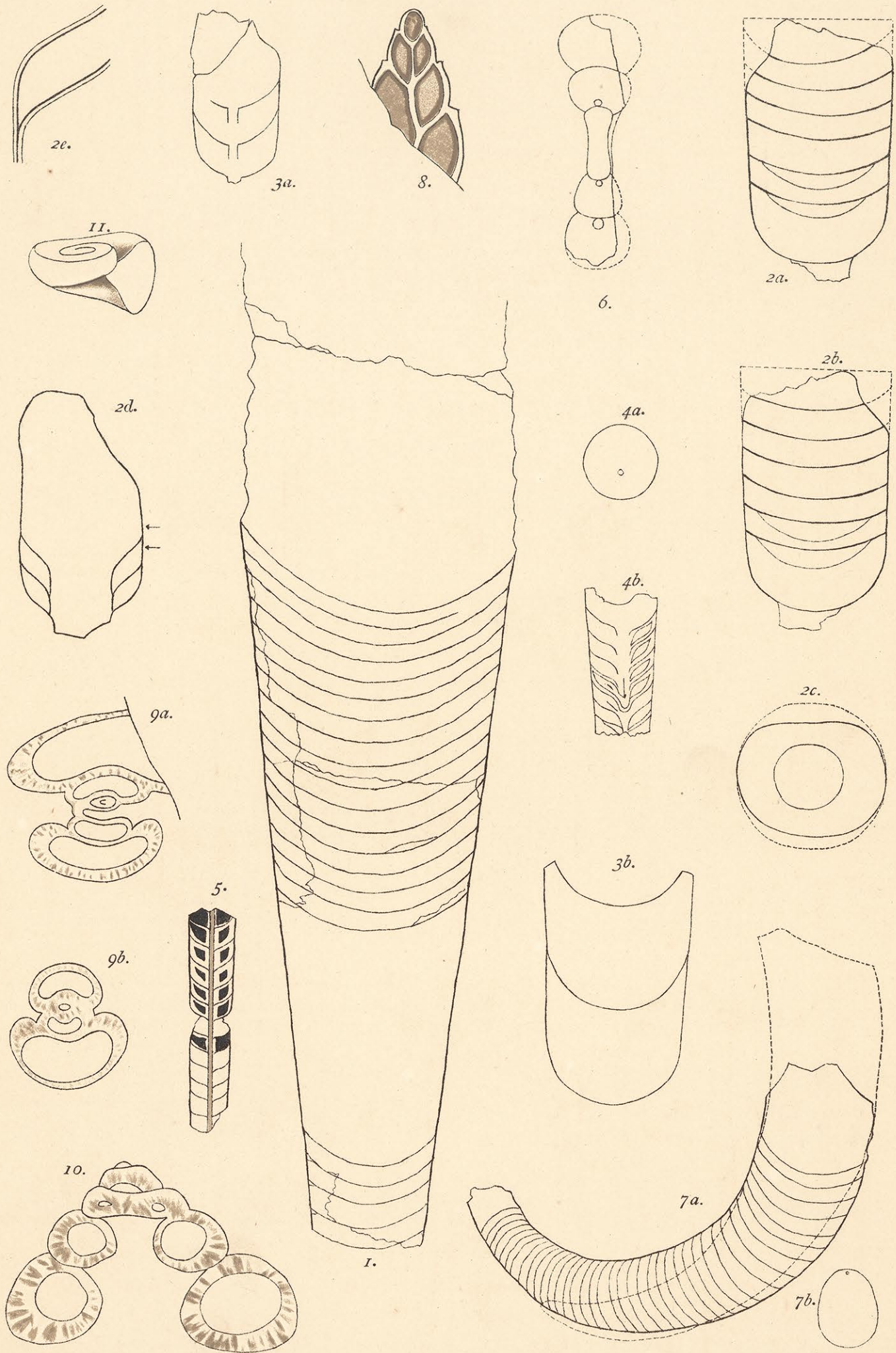




## Plate XXVII

- Fig. 1. Gen. et. sp. indet. nat. siz. (Ordovician.)  
Loc:—Siu chia-chao, between, Tung-shan and Han-ning, Prov. Hu-peh.  
湖北省, 通山咸寧間
- Fig. 2a, e. Orthoceras (?) sp. indet. nat. siz. See also pl. XVIII., fig. 3. (Ordovician.)  
Loc:—No-lu pin, Hu-ch'i, Hsing-shan-hsien, Prov. Hu-peh.  
湖北省, 興山縣, 戶溪
- Fig. 3a, b. Orthoceras chinense Foord. nat. siz. See also pl. XVI., figs. 3 and 4.  
(Ordovician.)  
Loc:—Hsing-shan-hsien, Prov. Hu-peh.  
湖北省, 興山縣
- Fig. 4a, b. Lituities (Ancistroceras) angelini Boll. nat. siz. See also pl. XVI., fig. 5  
(Ordovician.)  
Loc:—No-lu-ping, Hu-ch'i, Hsing-shan-hsien, Prov. Hu-peh.  
湖北省, 興山縣, 戶溪
- Fig. 5. Orthoceras sp. indet. nat. siz. See also pl. XVI., fig. 6. (Ordovician.)  
Loc:—Between Yang-ko-lao, Prov. Ssu-ch'uan and Chiu-tien-ya, Prov. Kuei-  
chou.  
四川省, 楊哥老 卜 貴州省, 酒店壩 卜 間
- Fig. 6. Discoceras sp. indet. nat. siz. See also pl. XIX., fig. 5. (Ordovician.)  
Loc:—No-lu-ping, Hu-ch'i, Hsing-shan-hsien, Prov. Hu-peh.  
湖北省, 興山縣, 戶溪
- Fig. 7a, b. Gyrtoceras (Meloceras) asiaticum Yabe. nat. siz. See also pl. XVIII., fig.  
14. (Ordovician.)  
Loc:—Pan-tsu ya, Hu-ch'i, Hsing-shan-hsien, Prov. Hu-peh.  
湖北省, 興山縣, 戶溪, 潘子壩
- Fig. 8. Macrocheilos arcuatum Goldf. var. subcostota Schloth. nat. siz. Reproduced  
from the figure given by Frech. (Middle Devonian.)  
Loc:—Heng-shan-hsien, Prov. Hu-nan.  
湖南省, 衡山縣
- Fig. 9a, b. Bellerophon memoria koreni Frech. nat. siz. Reproduction from Frech.  
(Middle Devonian.)  
Loc:—Heng-shang-hsien, Prov. Hu-nan.  
湖南省, 衡山縣
- Fig. 10. Pleurotomaria delphinuloides d'Arch. var. bathyschistus Frech. nat. siz. Re-  
production from Frech. (Middle Devonian.)  
Loc:—Heng-shan-hsien, Prov. Hu-nan.  
湖南省, 衡山縣







## Plate XXVIII

Fig. 1. *Sphaeracodium sinicum* Yabe. a  $\times 3\frac{1}{2}$  b  $\times 20$ . e highly magnified. (Permian—Triassic.)

Loc:—T'ieh-shih-k'ou, Hsin-pao-hsien, Prov. Kiang-si.

江西省, 信豐縣, 鐵石口

Figs. 2, 3a-b. *Batostomella antiqua* Yabe. 2  $\times 10$ , 3a-b  $\times 20$ . see also pl. XIX., fig. 4. (Ordovician.)

Loc:—Huang-chia-chang, Yi-chang-hsien, Prov. Hu-peh.

湖北省, 宜昌縣, 黃家場

Fig. 4. *Polypora of megastoma* Koninck. nat. siz. (Permian.)

Loc:—Wa-chiang, Yi-ch'un-hsien, Prov. Kiang-si.

江西省, 宜春縣, 瓦江

Fig. 5. *Lyroclakia* (?) sp, indet. nat. siz. (Permian.)

Loc:—Chu-tsai-tang, Wu-chang, Prov. Hu-peh.

湖北省, 武昌

Fig. 6a-c. *Beneckeia sinensis* Frech. nat. siz. (Lower Triassic.)

Loc:—Tzu-chiang-hsien (Gai-chou), Prov. Kuei-chou.

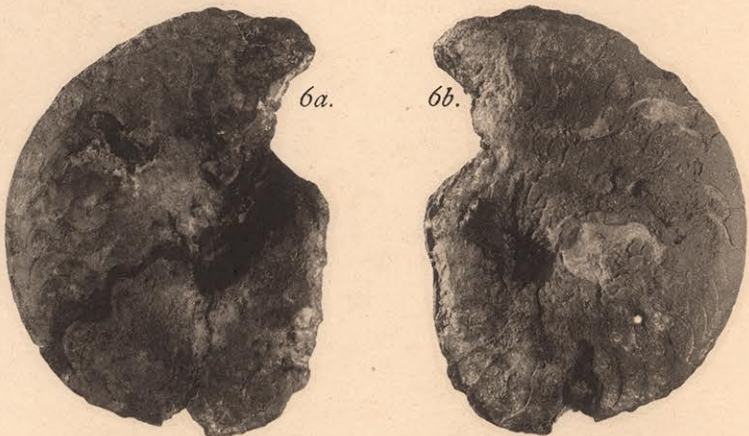
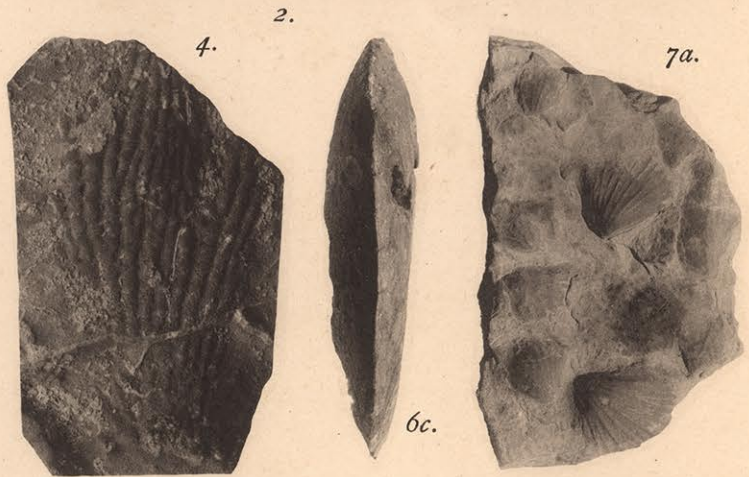
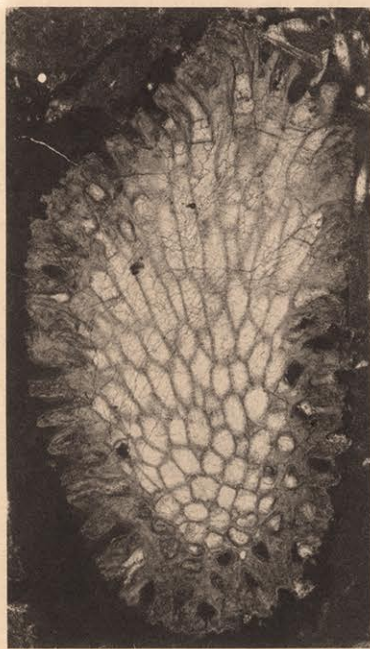
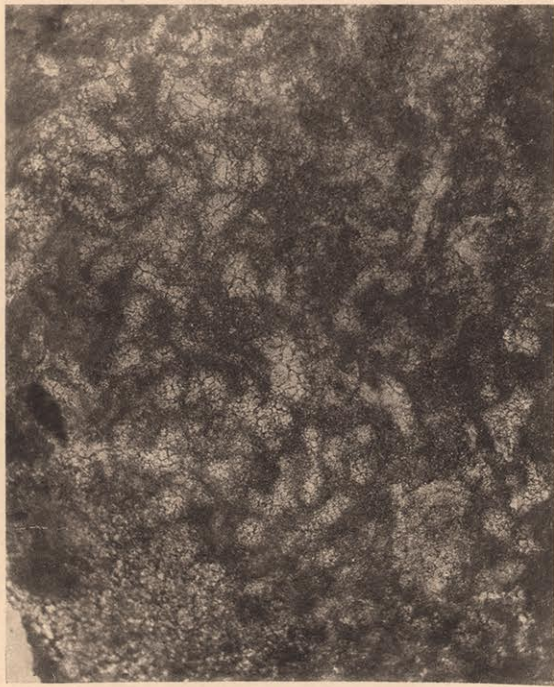
貴州省, 紫江縣(開州)

Fig. 7a-b. *Myophoria radiata* v. Loczy. nat. siz. (Middle Triassic.)

Loc:—Between Pei-gai-chang and Shin-mao-chang, Shu-wen-hsien, Prov. Kuei-chou.

貴州省, 修文縣







大正九年十二月十八日印刷  
大正九年十二月二十日發行

著作者兼  
发行者

東京地學協會

東京市京橋區西紺屋町十九番地

右代表者

東京地學  
協會理事

福地信世

印刷者

神谷次郎

東京市日本橋區兜町二番地

印刷所

東京印刷株式會社

東京市日本橋區兜町二番地