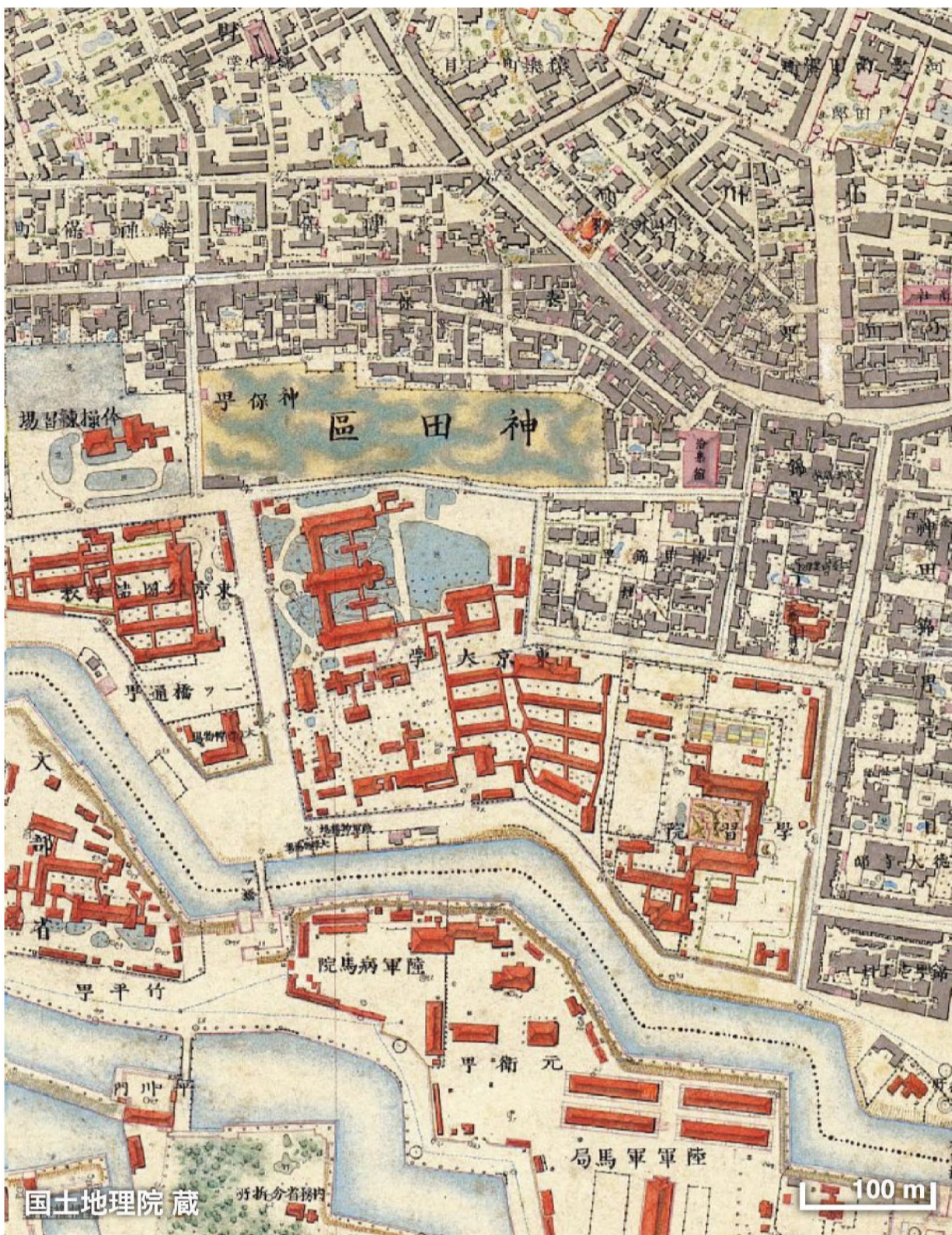


東京地学協会のおゆみ

History of Tokyo Geographical Society

東京地学協会

TOKYO GEOGRAPHICAL SOCIETY Founded in 1879



1879:
東京地学協会を神田錦町3丁目、学習院内に創立
The Tokyo Geographical Society was founded inside the Gakushu-in school located at Kanda Nishiki-cho.

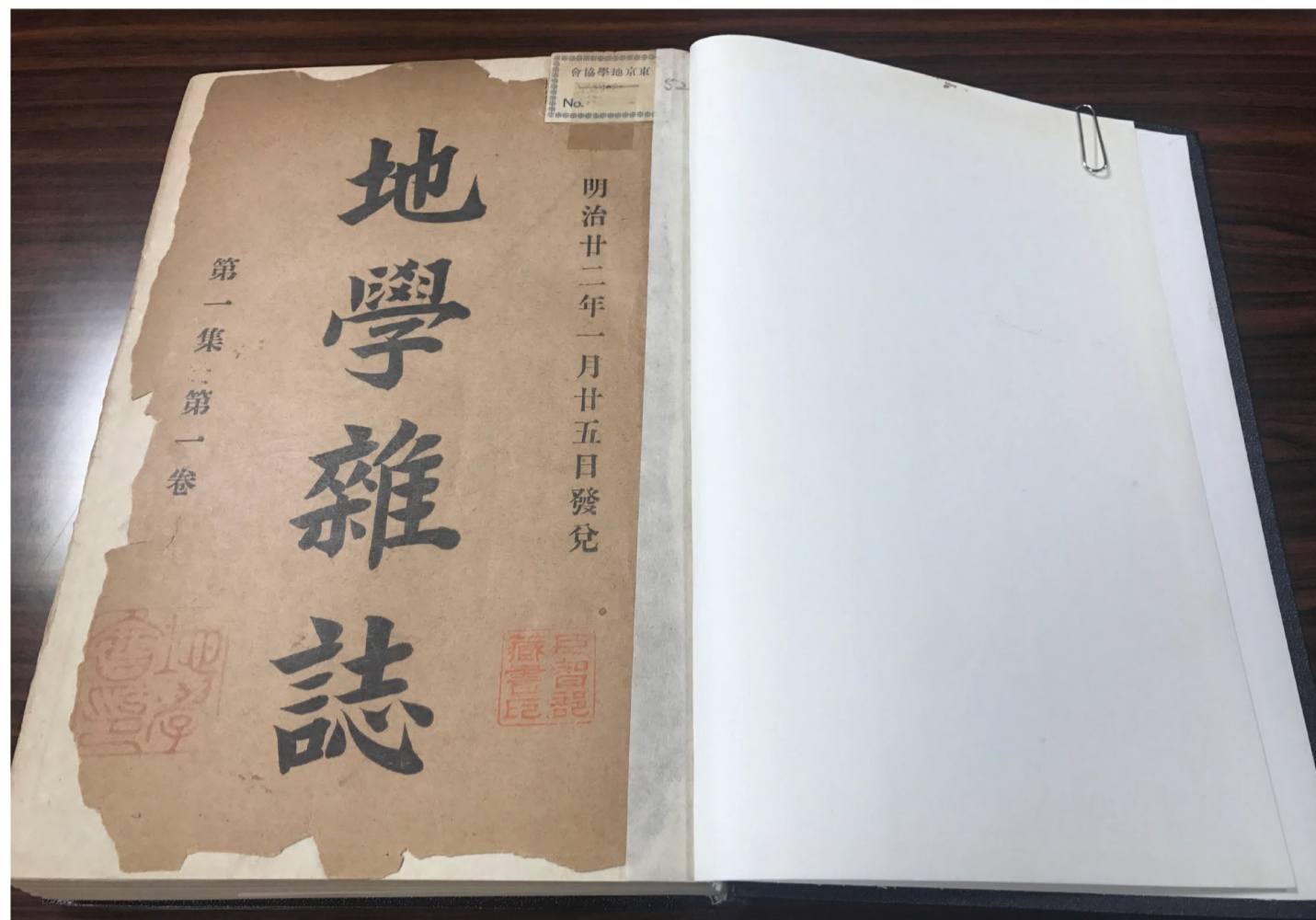
注) 図は日本地図センター編、2011、五千分一東京図測量原図より



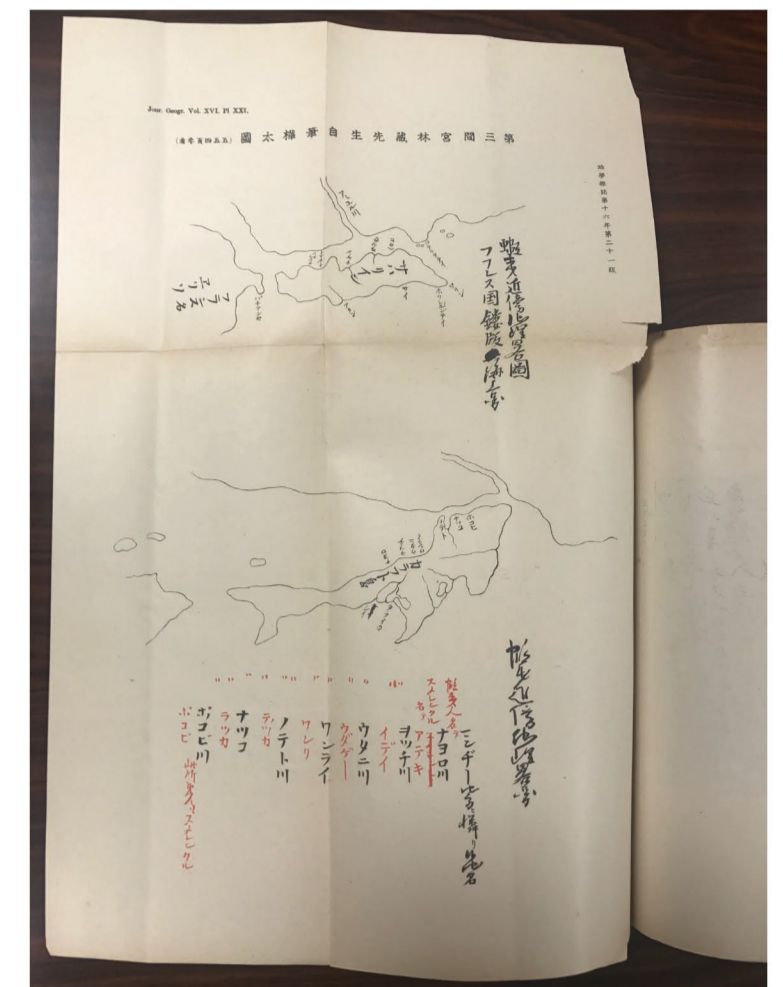
1930:
麹町区下二番町(現在地)に会館建設 事務所移転
Our office was relocated to a newly constructed building at Kojimachi-ward (currently part of Chiyoda-ward).



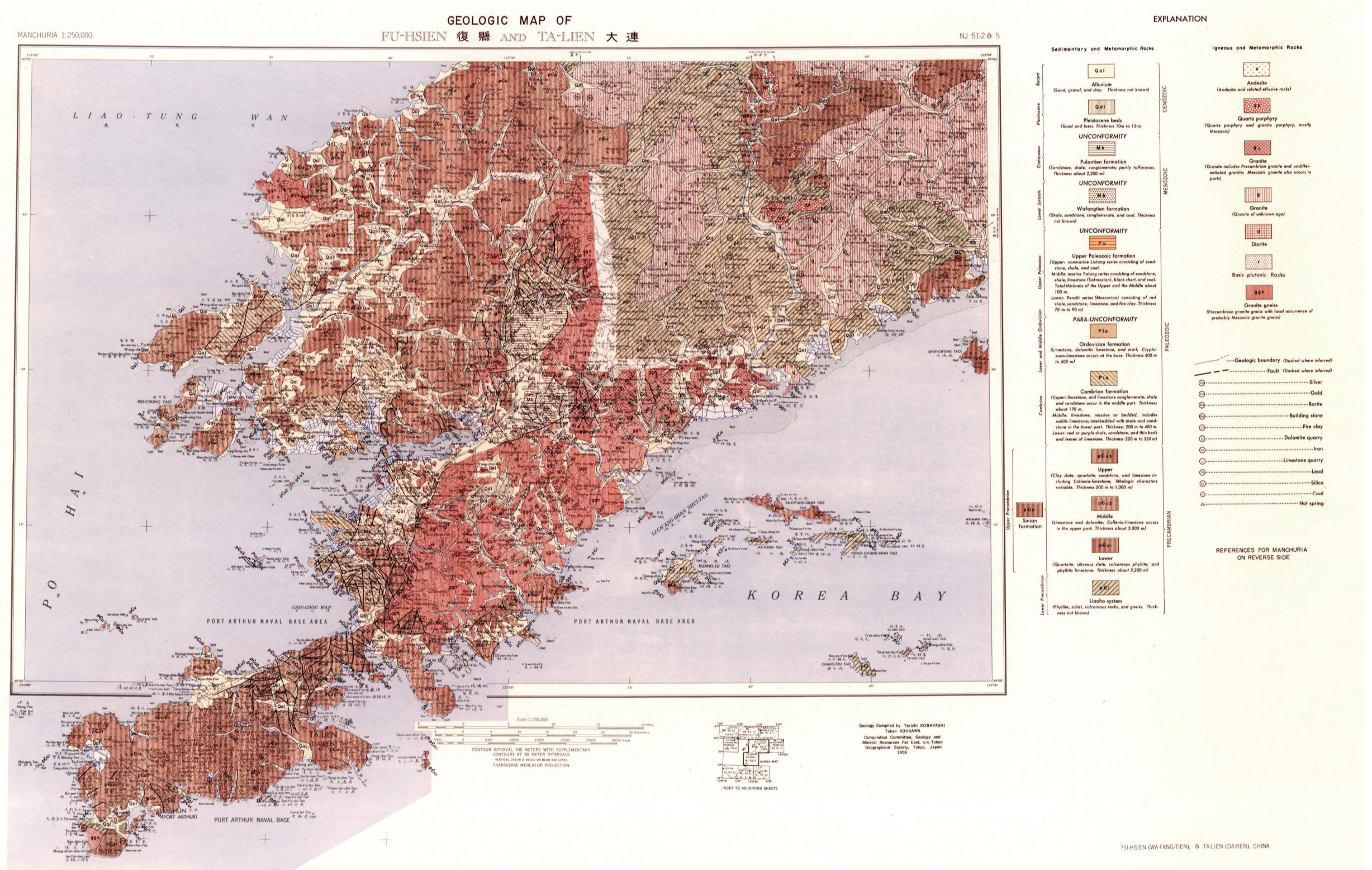
1965:
伊能忠敬測量遺功表を芝公園内に再建
The monument commemorating the completion of mapping of the Japanese Islands by Tadataka Ino was re-erected inside the Shiba Park by our Society.



1893:
東京大学地質学科内の地学会と合併。地学会が刊行していた「地学雑誌」を本協会の会誌として刊行、現在にいたる。
Our Society merged with the Geological Research Group of the University of Tokyo. Starting from the same year the "Journal of Geography (Chigaku-Zasshi)", originally published by the Geological Research Group, is issued by our society.



1904:
「地学雑誌」最初の特集号「間宮林蔵」刊行
The first Special Issue of the "Journal of Geography (Chigaku-Zasshi)" about explorer Rinzo Mamiya was published.



1960:
1:250,000 Geologic Maps Far East 127 sheets刊行完了
Completion of the publication of "1:250,000 Geologic Maps Far East 127 sheets".



1971:
著名な岩石学者坪井誠太郎東大名誉教授を第7代会長にして学術団体への脱皮を図る。
Prominent petrologist Seitaro Tsuboi, Emeritus Professor of the University of Tokyo, was appointed as the 7th president and our society shifted towards being a scientific organization.

注) 写真は Professor Seitaro Tsuboi in Petrology and Allied Fields, 1970 より



1979:
現地学会館竣工
Our present office building was constructed.